

**Renewable Water Resources  
Board Day Agenda  
Monday, February 26, 2024**



---

Centennial Ad Hoc Committee	1:30 P.M. – 2:25 P.M.	Board Room
O&P Committee	2:30 P.M. – 3:10 P.M.	Board Room
G&F Committee	3:15 P.M. – 4:00 P.M.	Board Room
Board Meeting	4:00 P.M.	Board Room

**DRAFT**



**Monday, February 26, 2024**  
**Centennial Ad Hoc Committee Meeting**

**AGENDA**

**Renewable Water Resources**  
**561 Mauldin Road**  
**Greenville, SC 29607**  
**Board Room**  
**1:30 P.M.**

**1. Call to Order**

---

1.01 Meeting Called to Order - Committee Chair Fletcher

**2. Welcome**

---

2.01 Welcome - Committee Chair Fletcher

**3. Centennial Project Presentations**

---

3.01 Centennial Project Presentation - Committee Chair Fletcher

**4. Centennial Updates - dfs creative concepts**

---

4.01 Branding & Messaging

4.02 Graphic Design

4.03 Upcountry History Museum Collaboration Update

4.04 Commemorative Film

4.05 Employee Engagement Event Planning

**5. Next Steps**

---

5.01 Next Steps - Committee Chairman Fletcher

**6. Adjournment**

---

6.01 Adjourn the Meeting

**7. Meeting Disclosures**

---

7.01 \*Following Board review and approval, this item will be made available to the public upon request based on ReWa's Public Information Policy approved May 23, 2011.



**Monday, February 26, 2024**  
**Operations and Planning Committee Meeting**

**AGENDA**

**Renewable Water Resources**  
**561 Mauldin Road**  
**Greenville, SC 29607**  
**Board Room**  
**2:30 P.M.**

**1. Call to Order**

---

1.01 Call to Order

**2. Welcome**

---

2.01 Commissioners: Committee Chair Danny Holliday, John T. Crawford Jr., Phyllis Henderson, Ray Overstreet, Tab Patton

2.02 Non-Committee Members and Staff Present

2.03 Recognition and Introduction of Visitors Present

**3. Georges Creek WRRF Carrousel Aerators Purchase Contract Award**

---

3.01 Georges Creek WRRF Carrousel Aerators Purchase Contract Award (Memo, Map, Resolution)\*\*

**4. Mauldin Road WRRF Dewatering System Upgrade Detailed Design Services Contract Amendment**

---

4.01 Mauldin Road WRRF Dewatering System Upgrade Detailed Design Services Contract Amendment (Memo, Map, Resolution)\*\*

**5. Highway 25 Business Park Phase 2 – Transfer of Assets to MetroConnects**

---

5.01 Highway 25 Business Park Phase 2 – Transfer of Assets to MetroConnects (Memo, Map, Resolution)\*\*

**6. New Business**

---

6.01 Verbal Briefing on Upcoming Projects and Items of Interest - NO ACTION REQUIRED

**7. Unfinished Business**

---

7.01 Unfinished Business

**8. Other Business**

---

8.01 Other Business

**9. Meeting Disclosures**

---

9.01 \*\*Following Board review and approval, this item will be made available to the public upon request based on ReWa's Public Information Policy approved May 23, 2011.

**10. Adjournment**

---

10.01 Adjourn the Meeting

**DATE:** February 26, 2024  
**TO:** Board of Commissioners  
**FROM:** Annie Crosby  
**CC:** Joel Jones, David Niese, Becca Bowyer  
**SUBJECT:** Georges Creek WRRF Carrousel Aerators  
 Purchase Contract Award



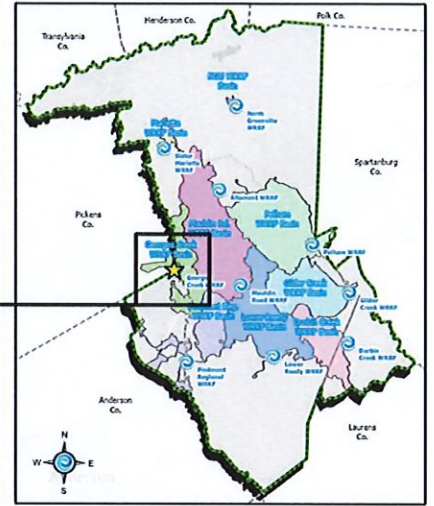
**BOARD OF COMMISSIONERS'**  
**MEMORANDUM**

The Georges Creek WRRF Aerators Replacement Project consists of the replacement of four (4) Carrousel Aerators for the biological treatment in the Oxidation Ditches. A sole source procurement was used in order to provide a direct replacement of the equipment to ensure both dimensional and performance compatibility minimizing the costs of construction modifications and downtime of the Ditches. Staff has negotiated a scope and fee with Ovivo USA for the supply of aerators for this project.

Project Name	Georges Creek Oxidation Ditch Aerators Replacement
Project Number	WK00501
Firm	Ovivo USA
Not-to-Exceed Cost	\$ 823,940.00
Amendment No.	N/A
Previous Contract Value	N/A
Total Contract Value	\$ 823,940.00
Contracting/Selection Method	Sole Source Procurement Contract

Staff recommends the Board award the Aerators Purchase to Ovivo USA and authorize the Chief Executive Officer to execute a contract for this Purchase Contract in an amount not to exceed \$823,940.00.

# Georges Creek WRRF



### Legend

- ReWa Service Area
- County Boundary
- ReWa WRRF
- ReWa Pump Station
- ReWa Project Location
- ReWa Gravity Main
- ReWa Force Main



This map is a product of ReWa. The accuracy and completeness of the lines and boundaries displayed on this map are believed to be accurate. ReWa expressly disclaims any responsibility or liability for this map.

**BOARD OF COMMISSIONERS'  
RESOLUTION**



Georges Creek WRRF Carrousel Aerators Purchase Contract Award

WHEREAS, the Georges Creek WRRF Aerators Replacement Project consists of the replacement of four (4) Carrousel Aerators for the biological treatment in the Oxidation Ditches;

NOW, THEREFORE, BE IT RESOLVED that Renewable Water Resources does hereby award this Purchase Contract to Ovivo USA for a cost not to exceed \$823,940.00 and that the Chief Executive Officer and/or his designee is hereby authorized to execute the contract.

The above Resolution, upon motion duly made, was passed and approved by the Board of Commissioners of Renewable Water Resources at a regular meeting held on the 26<sup>th</sup> day of February 2024.

**DRAFT**

\_\_\_\_\_  
R. L. FOGLEMAN, JR., CHAIR

ATTEST:

\_\_\_\_\_  
CLINTON J. THOMPSON, SECRETARY/TREASURER

**DATE:** February 26, 2024  
**TO:** Board of Commissioners  
**FROM:** Brianna Wallace  
**CC:** Joel Jones, David Niese, Becca Bowyer  
**SUBJECT:** Mauldin Road WRRF Dewatering System Upgrade Detailed Design Services Contract Amendment



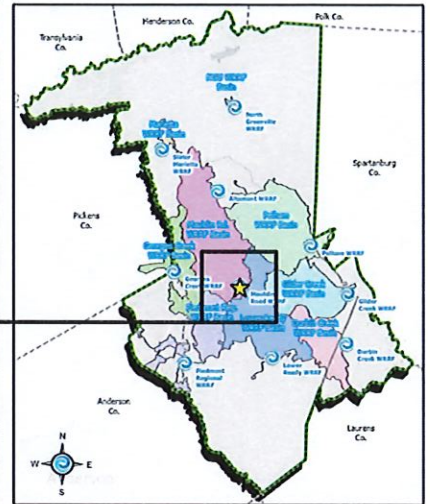
**BOARD OF COMMISSIONERS'**  
**MEMORANDUM**

The Mauldin Road WRRF Dewatering System Upgrade includes three new centrifuges installed in the existing Dewatering Building. The project will require complete upfit of the Dewatering Building and all equipment therein. It will also require additional upstream biosolids storage and digester transfer pump upgrades to allow for feeding the dewatering system at the required rate. GHD Consulting Services, Inc. has completed a preliminary design. Staff has negotiated a scope and fee with GHD Consulting Services, Inc. for detailed design and bidding services.

Project Name	Mauldin Road WRRF Dewatering System Upgrade
Project Number	PR-00054
Firm	GHD
Not-to-Exceed Cost	\$ 1,697,320
Amendment No.	1
Previous Contract Value	\$ 177,962
Total Contract Value	\$ 1,875,282
Contracting/Selection Method	Indefinite Delivery Contract

Staff recommends the Board award the Mauldin Road WRRF Dewatering System Upgrade Design Services to GHD Consulting Services, Inc. and authorize the Chief Executive Officer to execute Amendment No. 1 for \$1,697,320, increasing the overall contract to a not-to-exceed amount of \$1,875,282.

# Mauldin Road WRRF Dewatering System Upgrade



**Legend**

- ReWa Service Area
- County Boundary
- ReWa WRRF
- ReWa Pump Station
- ReWa Project Location
- ReWa Gravity Main
- ReWa Force Main

Scale: 0 150 300 Feet

This map is a product of ReWa. The accuracy and completeness of the lines and boundaries displayed on this map are believed to be accurate. ReWa expressly disclaims any responsibility or liability for this map.



**BOARD OF COMMISSIONERS'  
RESOLUTION**



Mauldin Road WRRF Dewatering System Upgrade Detailed Design Services Contract  
Amendment

WHEREAS, the Mauldin Road WRRF Dewatering System Upgrade consists of three new centrifuges, the complete upfit of the Dewatering Building and all equipment therein, and upgrade of the upstream biosolids feed;

WHEREAS, GHD Consulting Services, Inc. has previously been awarded \$177,962 for performing the preliminary engineering design of the project; and

WHEREAS, Staff has negotiated a fee not to exceed \$1,697,320 for the detailed design and bidding services;

NOW, THEREFORE, IT IS RESOLVED that Renewable Water Resources does hereby amend the contract with GHD Consulting Services, Inc. and authorize the Chief Executive Officer and/or his designee to execute an amendment to bring the total contract to a not-to-exceed amount of \$1,875,282.

The above Resolution, upon motion duly made, was passed and approved by the Board of Commissioners of Renewable Water Resources at a regular meeting held on the 26<sup>th</sup> day of February 2024.

\_\_\_\_\_  
R. L. FOGLEMAN, CHAIR

ATTEST:

\_\_\_\_\_  
CLINTON J. THOMPSON, SECRETARY/TREASURER

**DATE:** February 26, 2024  
**TO:** Board of Commissioners  
**FROM:** Jeff Case  
**CC:** Joel Jones, David Niese, Becca Bowyer  
**SUBJECT:** Highway 25 Business Park Phase 2 –  
Transfer of Assets to MetroConnects



**BOARD OF COMMISSIONERS'  
MEMORANDUM**

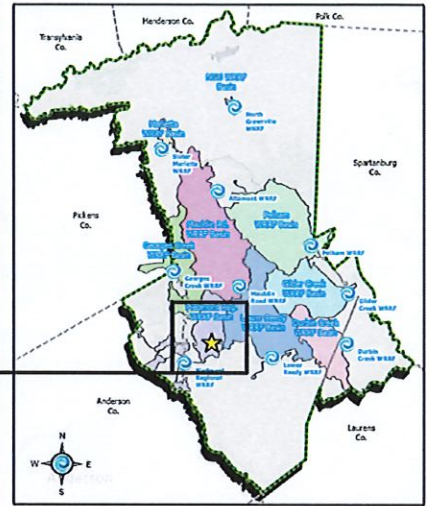
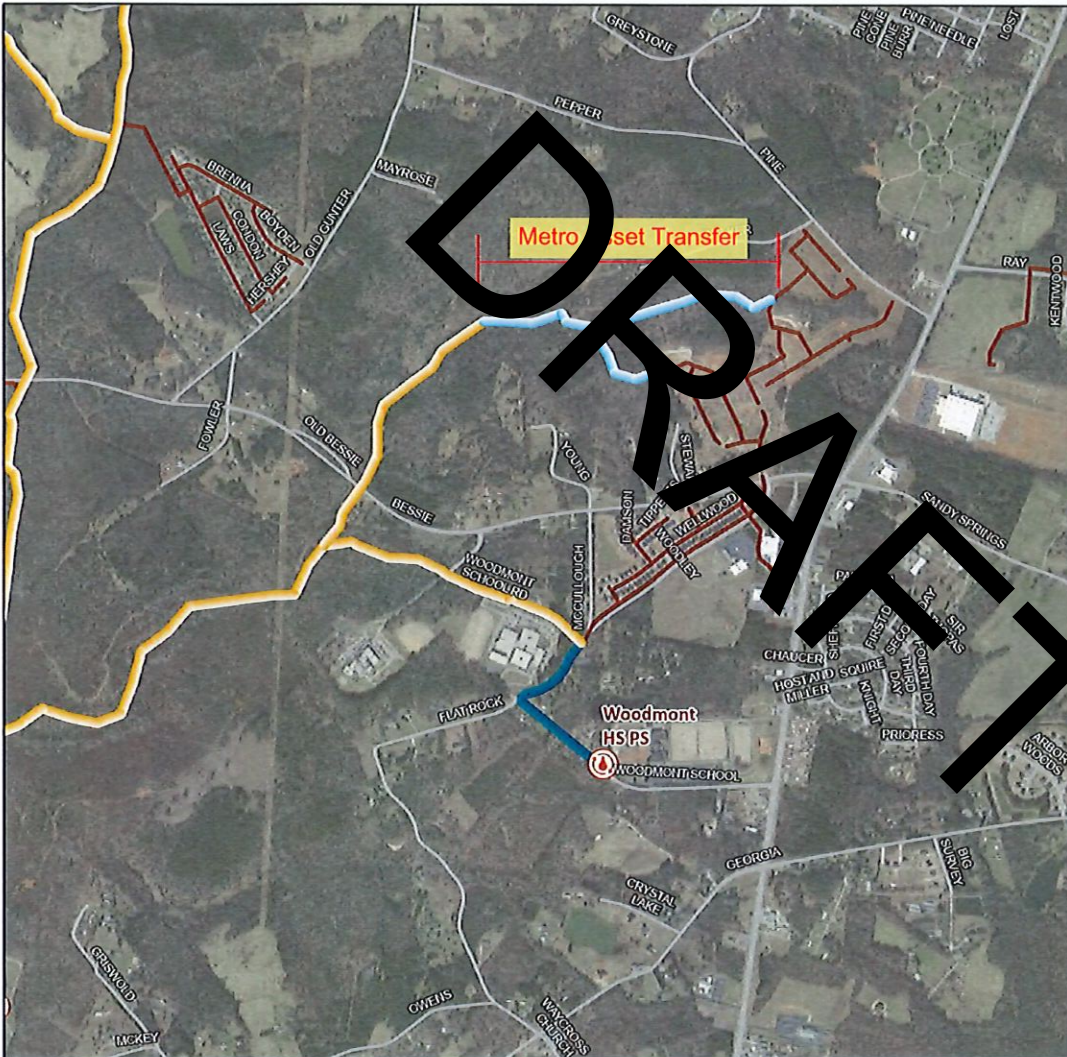
---

A cost share agreement between ReWa and MetroConnects was approved by the Board and executed on October 4, 2022, for the Highway 25 Business Park Phase 2 Project.

The project has been completed and staff recommends that the Board grant the transfer of 966.50 LF 12" PVC gravity sewer, 102.70 LF 12" DIP gravity sewer, 194.90 LF of 18" DIP gravity sewer, 2,953 LF of 8" PVC gravity sewer, 2-5' diameter manholes, 17-4' diameter manholes and 116,675 square feet of permanent sewer easement to MetroConnects and authorize the Chief Executive Officer and/or his designee to execute the transfer of assets.

**DRAFT**

# Highway 25 Business Park Ph.2 Sewer Main Asset Transfer (PP05)



**Legend**

- ReWa Service Area
- County Boundary
- ReWa WRRF
- ReWa Pump Station
- Sewer Main Transfer
- ReWa Gravity Main
- ReWa Force Main
- MetroConnects Gravity Main

Scale: 0 800 1,600 Feet

This map is a product of ReWa. The accuracy and completeness of the lines and boundaries displayed on this map are believed to be accurate. ReWa expressly disclaims any responsibility or liability for this map.

**BOARD OF COMMISSIONERS'  
RESOLUTION**



Highway 25 Business Park Ph. 2 – Transfer of Assets to MetroConnects

WHEREAS, ReWa recently completed the Highway 25 Business Park Phase 2 project in Piedmont, SC; and

WHEREAS, Renewable Water Resource's (ReWa) and MetroConnects entered into a cost share agreement that involved ReWa installing MetroConnects infrastructure and acquiring easements on their behalf and MetroConnects compensating ReWa for said infrastructure;

NOW, THEREFORE, BE IT RESOLVED that Renewable Water Resources does hereby approve the transfer of gravity sewer and appurtenances and 116,675 square feet of permanent sewer easement to MetroConnects and authorizes the Chief Executive Officer and/or his designee to execute the transfer of assets, conditioned upon and subject to the following:

1. MetroConnects acceptance.
2. MetroConnects compliance with the terms and conditions set forth in the cost share agreement.

The above Resolution, upon motion duly made, was passed and approved by the Board of Commissioners of ReWa at a regular meeting held on the 26<sup>th</sup> day of February 2024.

---

R. L. FOGLEMAN, JR., CHAIR

ATTEST:

---

CLINTON J. THOMPSON, SECRETARY/TREASURER



**Monday, February 26, 2024**  
**Governance and Finance Committee Meeting**

**AGENDA**  
**Renewable Water Resources**  
**561 Mauldin Road**  
**Greenville, SC 29607**  
**Board Room**  
**3:15 PM**

**1. Call to Order**

---

1.01 Meeting Called to Order

**2. Welcome**

---

2.01 Committee Members: Committee Chair Thomas H. Coker III, John T. Crawford, Daniel P. Hamilton, Emily K. DeRoberts, & George W. Fletcher

2.02 Non-Committee Members and Staff

2.03 Recognition and Introduction of Visitors Present

**3. Investment Summary**

---

3.01 Investment Summary 01-31-24 - NO ACTION REQUIRED

**4. Summary of Financial Condition**

---

4.01 Summary of Financial Condition 01-31-24 - NO ACTION REQUIRED

**5. New Account Fee Classification Report**

---

5.01 New Account Fee Classification Report - NO ACTION REQUIRED

**6. Sustainability Services Scorecard**

---

6.01 Sustainability Services Scorecard - NO ACTION REQUIRED

**7. New Business**

---

7.01 New Business

**8. Unfinished Business**

---

8.01 Unfinished Business

**9. Other Business**

---

9.01 Other Business

**10. Adjournment**

---

10.01 Adjourn the meeting

**11. Meeting Disclosures**

---

11.01 \*\*Following Board review and approval, this item will be made available to the public upon request based on ReWa's Public Information Policy approved May 23, 2011.

**Renewable Water Resources  
Cash and Investment Summary  
January 31, 2024**

	Interest Rate	Balance December 31, 2023	Balance January 31, 2024	Period Change
<b>Cash and investments by institution</b>				
U.S. Bank debt service fund <sup>1</sup>	0.001%	\$ 26,121,939	\$ 5,915,599	\$ (20,206,340)
Southern First Bank MM	5.500%	30,580,635	28,721,290	(1,859,345)
Southern First Bank MM NAF	5.500%	634,747	637,704	2,957
UBS Financial Services	1.718%	12,651,488	13,661,340	1,009,850
UBS Financial Services NAF	0.600%	5,647,830	5,664,620	17,290
MBS-Multi Bank Securities	2.555%	1,229,887	1,233,529	4,392
SC Local Government Investment Pool NAF	5.610%	1,040,230	1,045,216	4,957
SC Local Government Investment Pool	5.610%	10,564	109,081	517
Truist checking	0.350%	75,888	8,892,097	(6,083,789)
Truist new account fee	2.470%	510,238	511,292	1,049
Truist Peters Creek	2.470%	5,849	78,012	163
Petty cash	n/a	576	976	400
<b>Total funds</b>		<b>\$ 93,578,655</b>	<b>\$ 66,470,756</b>	<b>\$ (27,107,899)</b>
<b>Less: Restricted funds</b>				
U.S. Bank debt service fund <sup>1</sup>		26,121,939	5,915,599	(20,206,340)
Bond covenant: operations & maintenance <sup>2</sup>		4,195,780	4,557,930	362,150
<b>Total restricted funds</b>		<b>30,317,719</b>	<b>10,473,529</b>	<b>(19,844,190)</b>
<b>Total unrestricted funds<sup>3</sup></b>		<b>63,260,936</b>	<b>55,997,227</b>	<b>(7,263,709)</b>
<b>Less: Committed and assigned funds</b>				
Committed: new account fee <sup>4</sup>		12,318,481	11,976,213	(342,268)
Assigned: emergency <sup>5</sup>		2,083,111	2,220,663	137,552
<b>Total committed and assigned funds</b>		<b>14,401,592</b>	<b>14,196,876</b>	<b>(204,716)</b>
<b>Total available funds</b>		<b>\$ 48,859,344</b>	<b>\$ 41,800,351</b>	<b>\$ (7,058,993)</b>

<sup>1</sup> Funds held in trust for upcoming principal and interest payments in accordance with section 4.08 of the series resolution adopted December 6, 2004.

<sup>2</sup> Funds restricted for operating & maintenance expenses in accordance with the bond resolution adopted June 14, 2010.

<sup>3</sup> Unrestricted funds are generally available and not legally restricted. While unrestricted cash reserves are generally available, it is ReWa's policy to maintain the following liquidity target:  
- 250 days of cash on hand: unrestricted cash and investments divided by total operating expenses before depreciation, expressed in number of days.

<sup>4</sup> Monies received from new account fees committed to fund capacity increases.

<sup>5</sup> Monies assigned for emergency expenditures.

**DRAFT**

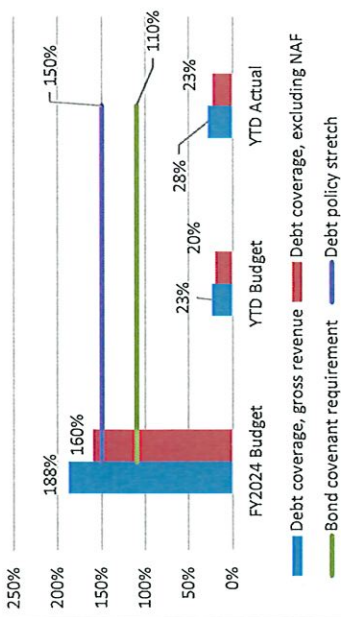
Renewable Water Resources  
 Summary of Financial Condition  
 January 1, 2024 - January 31, 2024

	2024 FY Budget	2023 YTD Actual	2024 YTD Budget	2024 YTD Actual	Favorable (Unfavorable) USD	Favorable (Unfavorable) %
<b>Revenue</b>						
Domestic and commercial	\$ 101,467,451	\$ 9,410,106	\$ 8,428,629	\$ 7,614,979	\$ (813,650)	(10%)
Industrial	8,456,400	815,342	829,100	860,230	31,130	4%
New account fee (NAF)	10,000,000	680,950	833,333	1,322,833	489,500	59%
Septic haulers and other	760,000	50,642	63,333	53,084	(10,249)	(16%)
Unrestricted investment revenue	1,000,000	128,819	83,333	252,593	169,260	203%
Investment fair value adjustment	-	134,646	83,333	56,267	56,267	(100%)
Miscellaneous revenue	349,274	134,589	29,007	27,962	(1,145)	(4%)
<b>Gross revenue</b>	<b>\$ 122,033,125</b>	<b>\$ 11,355,094</b>	<b>\$ 10,266,105</b>	<b>\$ 10,879,948</b>	<b>\$ (78,887)</b>	<b>(1%)</b>
<b>Expense</b>						
<b>Administration</b>						
Administrative finance	\$ 12,971,875	\$ 1,323,584	\$ 1,634,411	\$ 679,492	\$ 473,981	41%
Business services	3,408,394	183,211	302,477	254,852	47,626	16%
Human resources	3,689,024	151,336	204,866	231,934	(27,648)	(14%)
Information technology	4,320,096	612,044	717,969	246,227	331,742	57%
<b>Technical operations</b>						
Collections & maintenance	6,655,119	410,127	565,107	485,795	79,312	14%
Engineering	1,512,781	125,658	126,132	73,272	52,860	42%
Regulatory services	7,968,583	67,298	648,170	252,667	395,503	61%
Water resource recovery facilities	14,169,292	81,474	1,227,147	1,368,114	(140,967)	(11%)
Total O&M departmental expense	54,695,164	3,977,655	4,804,762	3,592,353	1,212,409	25%
Debt service	35,800,793	23,777,934	23,434,869	23,402,950	31,919	0%
<b>Total operational expense &amp; debt</b>	<b>\$ 90,513,177</b>	<b>\$ 27,692,389</b>	<b>\$ 28,239,631</b>	<b>\$ 26,995,303</b>	<b>\$ 1,244,328</b>	<b>4%</b>
<b>Contribution to capital</b>		<b>(16,337,295)</b>		<b>(16,807,355)</b>		



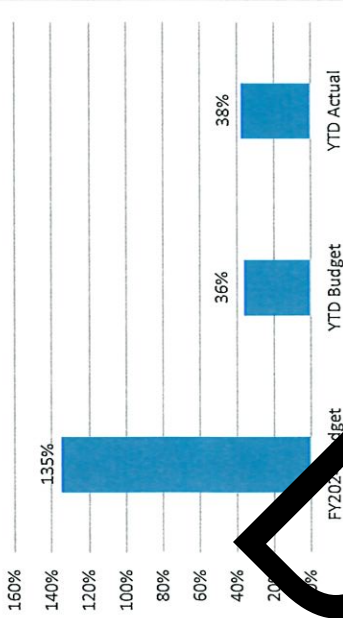
## Key Operating Metrics

### Debt Coverage<sup>(1)</sup>



<sup>(1)</sup>Percentage of revenue after operating expense to cover long term debt payments

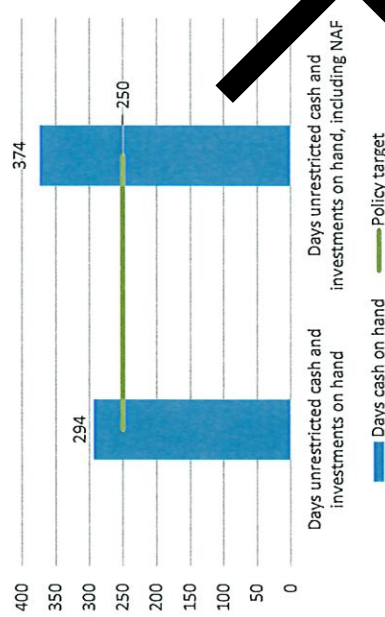
### Rate Adequacy<sup>(2)</sup>



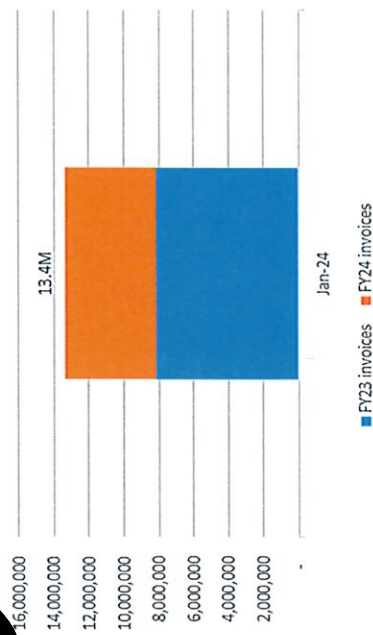
<sup>(2)</sup>Revenue coverage for both operating and long term debt expense

## YTD Project Payments

### Days Cash on Hand



### Project Payments by Month





Renewable Water Resources  
NAF Classification Report

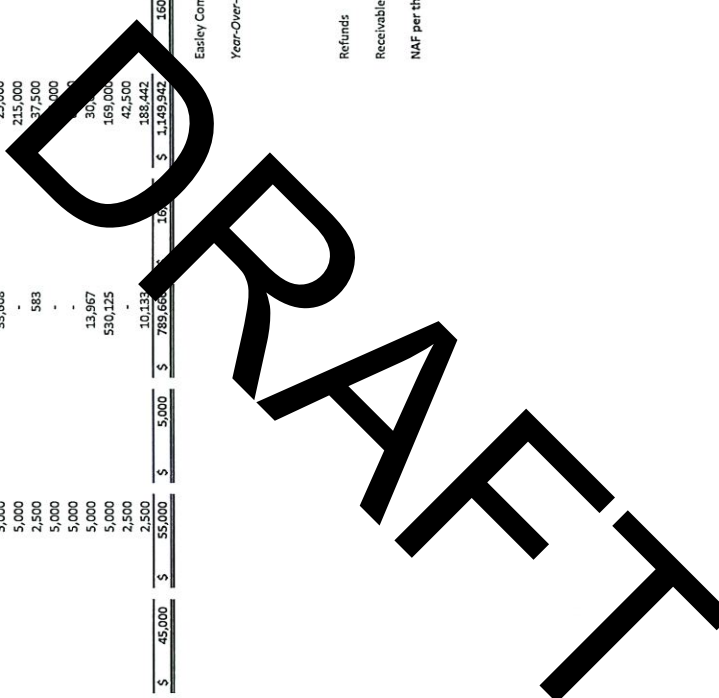
	Subdivision		Multi-family		Individual Home		Septic to Sewer		Mixed Use		Commercial		Retail		Totals	
	FY23	FY24	FY23	FY24	FY23	FY24	FY23	FY24	FY23	FY24	FY23	FY24	FY23	FY24	FY23	FY24
January	\$ 342,500	\$ 532,500	\$ 3,750	\$ 555,000	\$ 27,500	\$ 45,000	\$ 7,500	\$ 5,000	\$ 146,250	\$ 16,933	\$ 142,500	\$ 160,000	\$ 48,450	\$ 9,000	\$ 718,450	\$ 1,322,833
February	815,000		5,000		52,500		5,000		45,000		80,000		24,300		1,026,800	
March	745,000		3,750		33,750		5,000		10,000		37,500		18,000		853,000	
April	866,600		686,250		63,400		5,000		33,608		25,000		6,300		1,696,158	
May	637,500		292,500		52,500		5,000		-		215,000		20,000		1,222,500	
June	1,060,000		200,000		50,000		2,500		583		37,500		14,400		1,354,983	
July	1,095,000				17,500		5,000		-		7,000		10,800		1,159,300	
August	845,000		3,750		37,500		5,000		-		30,000		24,900		983,650	
September	677,500		20,000		35,000		5,000		13,967		169,000		593,400		1,374,867	
October	863,400		132,500		31,600		5,000		530,125		42,500		7,200		1,738,825	
November	427,500		5,000		95,000		2,500		-		177,600		177,600		750,100	
December	1,318,833		420,000		32,500		2,500		10,133		188,442		2,700		1,875,108	
<b>Totals</b>	<b>\$ 9,593,833</b>	<b>\$ 532,500</b>	<b>\$ 1,772,500</b>	<b>\$ 555,000</b>	<b>\$ 528,750</b>	<b>\$ 45,000</b>	<b>\$ 35,000</b>	<b>\$ 5,000</b>	<b>\$ 789,668</b>	<b>\$ 16,933</b>	<b>\$ 1,149,942</b>	<b>\$ 160,000</b>	<b>\$ 948,050</b>	<b>\$ 9,000</b>	<b>\$ 14,837,741</b>	<b>\$ 1,322,833</b>

Easley Combined Utilities

Year-Over-Year Totals

Refunds  
Receivables / Outstanding Deposits

New Account Fees per the Summary of Financial Condition



Easley Combined Utilities

Year-Over-Year Totals

Refunds  
Receivables / Outstanding Deposits

NAF per the Summary of Financial Condition

# Sustainability Services Scorecard

	2022	2023	2024 YTD	Jan
Recruiting/Retention	Overall Turnover %	18%	15.0%	1.0%
	Terminations	32	28	2
	New Hires (FTE's)	29	43	2
	Headcount (full time, no commissioners)	178	186	193
	Open Positions	13	16	16
	Overtime Hours	5,008	5,639	885
	Manhours (Exempt and Non-Exempt) - not including OT	322,562	341,745	30,538
	Vacancy Rate	9%	9%	12%
	Near Misses	3	12	2
	Recordables	2	3	1
Safety and Wellness	Lost Time	1	1	-
	Vehicle Incident	14	22	1
	Potential Hazards	20	115	45
	Nurse Practitioner Visits	1,288	1,320	184
	Health Plan Savings	\$ 81,721	\$ 105,062	\$ 11,078
	Productivity Savings	\$ 130,224	\$ 125,177	\$ 10,802
	Formal Wellness Activities/Programs	16	51	3
	Social Media Followers (FB, IG, LI, twitter)		3,472	4,012
	Off campus/-n-the community outreach opportunities		149	8
	Tours/Visits on site		104	5
Community				



**Monday, February 26, 2024  
Board of Commissioners' Meeting**

**AGENDA**

**Renewable Water Resources**

**561 Mauldin Road**

**Greenville, SC 29607**

**Board Room**

**<https://us02web.zoom.us/j/87295842766>**

**4:00 P.M.**

**1. Call to Order**

---

1.01 Call to Order

**2. Welcome**

---

2.01 Commissioners Present

2.02 Staff Present

2.03 Introduction of Visitors Present

**3. Pledge of Allegiance/Prayer**

---

3.01 Pledge of Allegiance/Prayer

**4. Recognitions**

---

4.01 Recognition of the ReWa Apprenticeship Program Graduates - Chair Fogleman

4.02 Special Recognition of Larry Camp, Senior Process Quality and Training Lead - Chair Fogleman

**5. Safety Moment**

---

5.01 Safety Moment - NO ACTION REQUIRED

**6. Consent Agenda\***

---

6.01 Minutes of the January 22, 2024 Board of Commissioners' Centennial Ad Hoc Committee Meeting\*\*

6.02 Minutes of the January 22, 2024 Board of Commissioners' Governance & Finance Committee Meeting\*\*

6.03 Minutes of the January 22, 2024 Board of Commissioners' Operations & Planning Committee Meeting\*\*

6.04 Minutes of the January 22, 2024 Board of Commissioners' Public Hearing\*\*

6.05 Minutes of the January 22, 2024 Board of Commissioners' Meeting\*\*

**7. Governance & Finance - February 26, 2024**

---

7.01 Investment Summary 01-31-24 - NO ACTION REQUIRED

7.02 Summary of Financial Condition 01-31-24 - NO ACTION REQUIRED

7.03 New Account Fee Classification Report - NO ACTION REQUIRED

7.04 Sustainability Services Scorecard - NO ACTION REQUIRED

**8. Operations & Planning - February 26, 2024**

---

8.01 Georges Creek WRRF Carrousel Aerators Purchase Contract Award (Memo, Map, Resolution)\*\*

8.02 Mauldin Road WRRF Dewatering System Upgrade Detailed Design Services Contract Amendment (Memo, Map, Resolution)\*\*

8.03 Highway 25 Business Park Phase 2 – Transfer of Assets to MetroConnects (Memo, Map, Resolution)\*\*

**9. Unfinished Business**

---

9.01 Verbal Briefing of the February 26, 2024 Centennial Ad Hoc Committee Meeting and Centennial Project Presentation - presented by Centennial Ad Hoc Committee Chair George Fletcher

**10. New Business**

---

10.01 Unfinished Business

**11. Other Business**

---

11.01 CEO Look Ahead - CEO Jones

**12. Executive Session**

---

12.01 Receipt of Legal Advice Regarding the Potential Settlement of Legal Claims and Separately Proposed Contractual Agreements

**13. Post Executive Session**

---

13.01 Action on Items in Executive Session (if applicable)

**14. Adjournment**

---

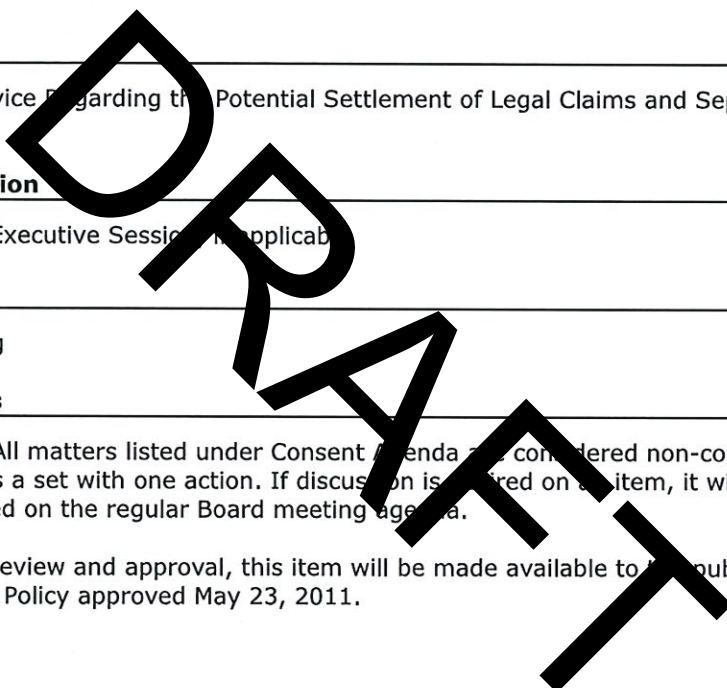
14.01 Adjourn the Meeting

**15. Meeting Disclosures**

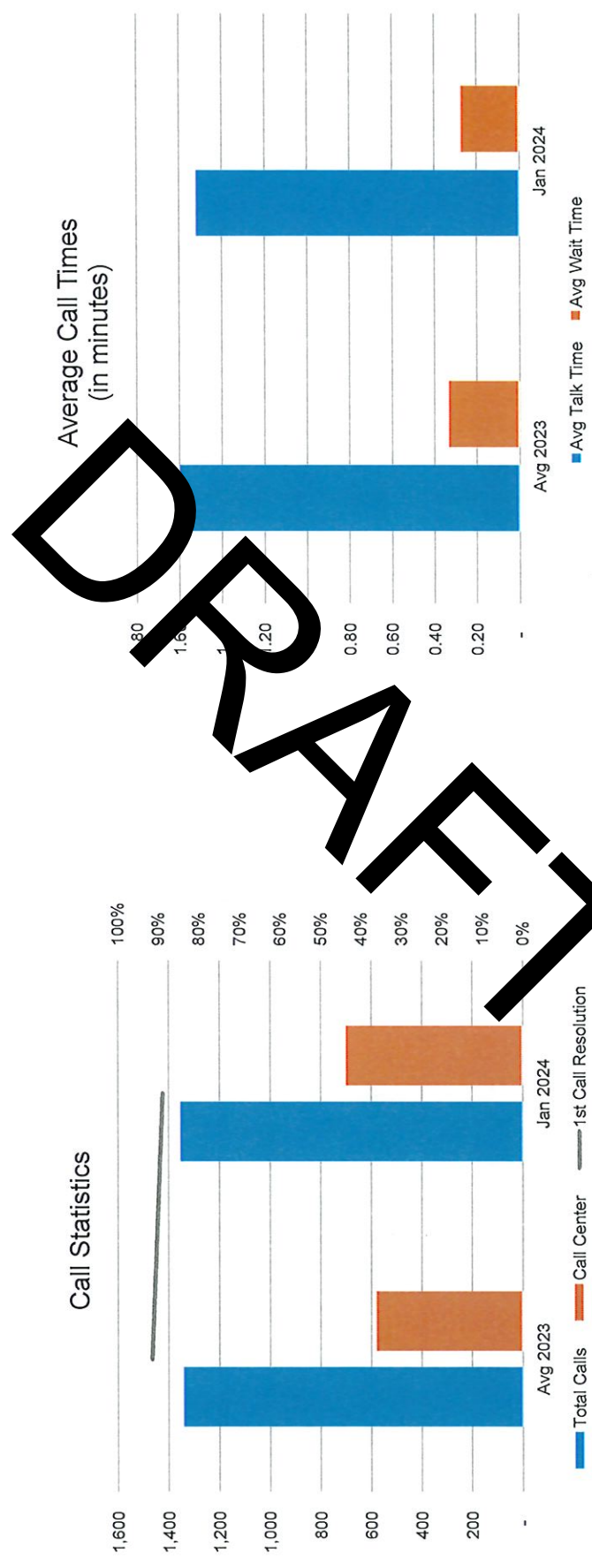
---

15.01 \*Consent Agenda: All matters listed under Consent Agenda are considered non-controversial Board action items and are approved as a set with one action. If discussion is required on an item, it will be removed from the Consent Agenda and placed on the regular Board meeting agenda.

15.02 \*\*Following Board review and approval, this item will be made available to the public upon request based on ReWa's Public Information Policy approved May 23, 2011.



# 2024 Customer Service Metrics

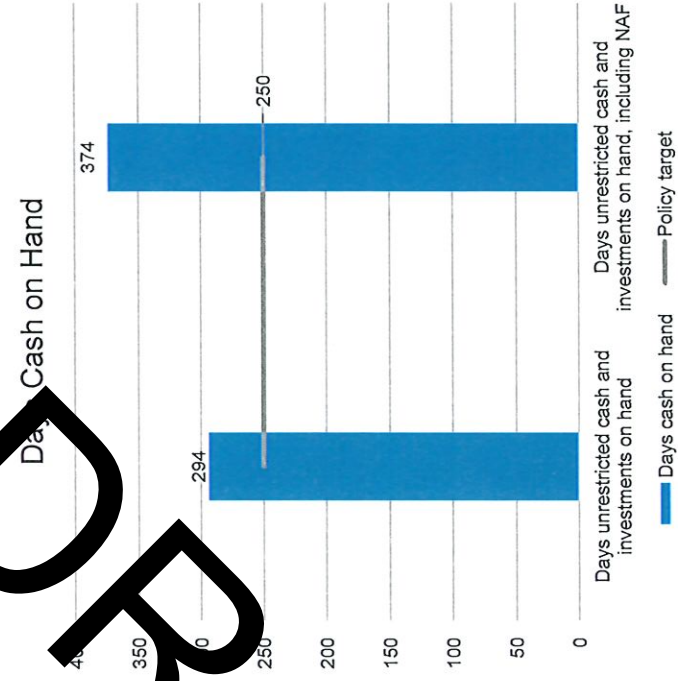
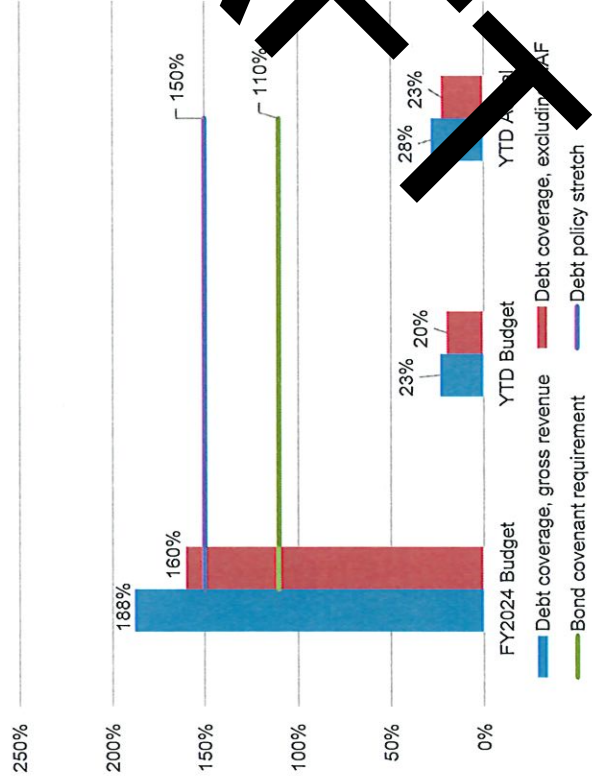


- **Total Calls** = calls received by receptionist and customer service team
- **Call Center** = all customer calls handled by receptionist and customer service team
- **Average Talk Time** = average time customer talking with ReWa employee
- **Average Wait Time** = average time customer on hold waiting for a ReWa employee to answer call

# 2024 Financial Policy Metrics

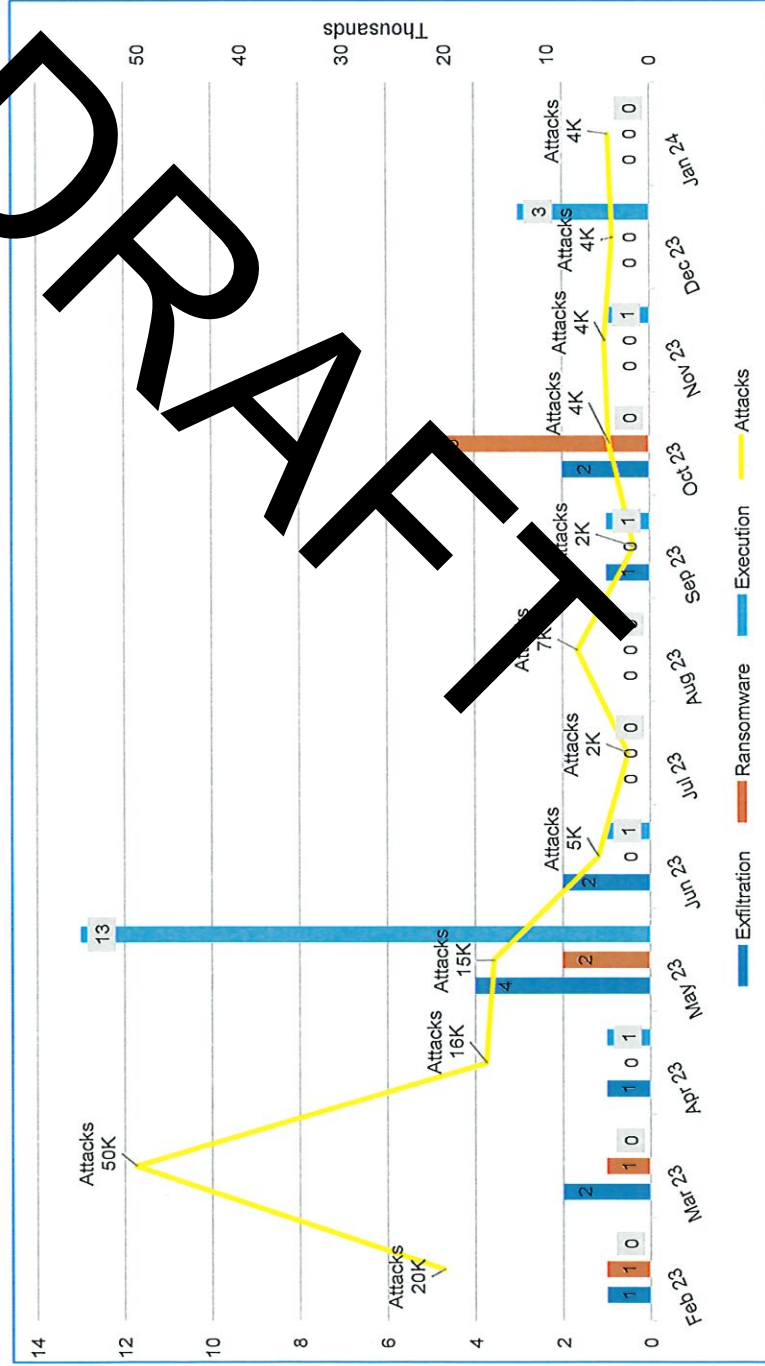
DRAFT

Debt Coverage<sup>(1)</sup>



<sup>(1)</sup>Percentage of revenue after operating expense to cover long term debt payments

# Cybersecurity Attacks (12 months rolling)



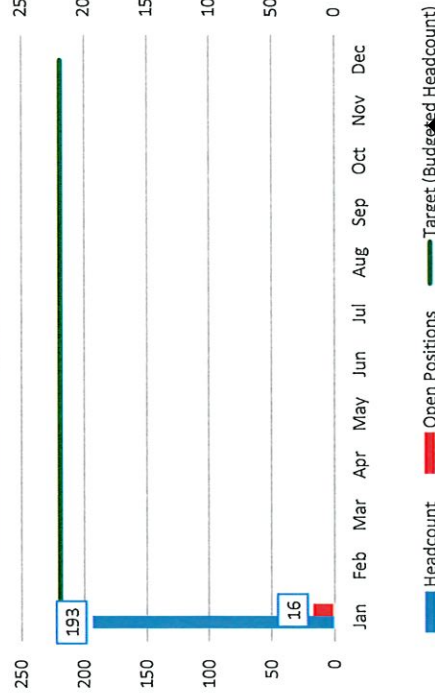
- **Exfiltration**- Type of cyber attack where an attacker steals sensitive or confidential information from a targeted system or network and then sends it to an external location, typically a server or computer controlled by the attacker.

- **Ransomware**- Type of malware that encrypts files on a computer or network, making them inaccessible to the user, and demands a ransom payment in exchange for the decryption key to restore access to the encrypted files.

- **Execution**- Type of attack in which an attacker seeks to execute unauthorized code or commands on a targeted system or network



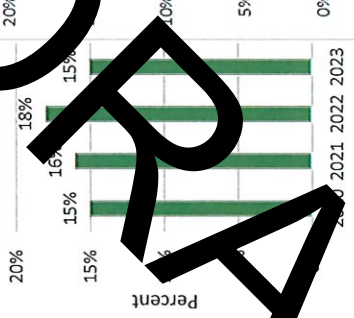
ReWa Total FTEs/Open Positions



2024 Turnover

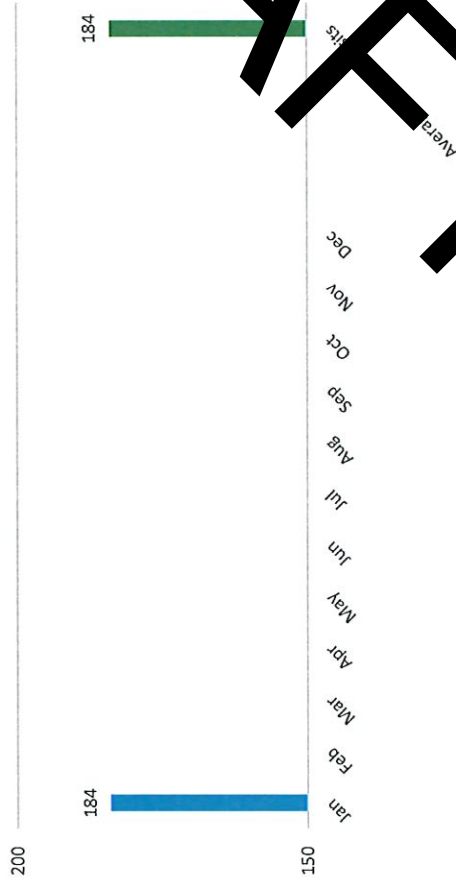


Historical Data



- Not all budgeted headcount has an active requisition
- **193** is a “snap shot” at the end of the month and does not always reflect all employees that worked that month (i.e. terminations)
- **16** open positions (once a job has been posted, it remains open until the candidate starts)
- **Turnover Calculation = (Resignation + Retirements + Involuntary terminations) / Headcount**
- **2** terminations year to date

Nurse Practitioner Visit



workforce utilization rate for the Nurse Practitioner in 2024.

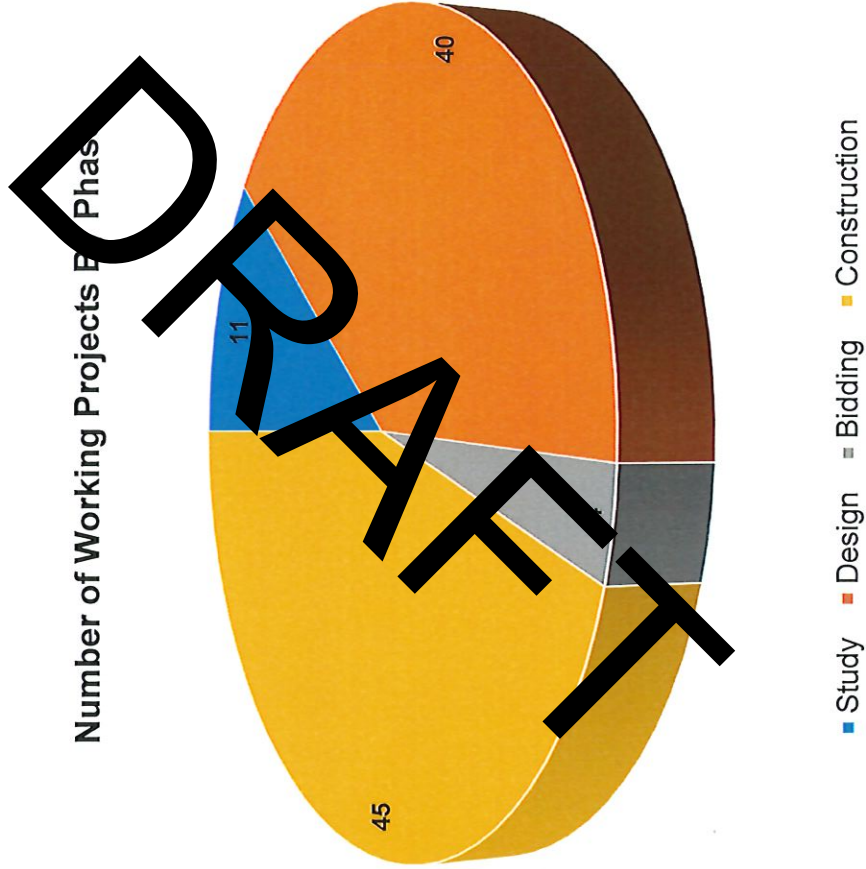
**21%**

**DRY**

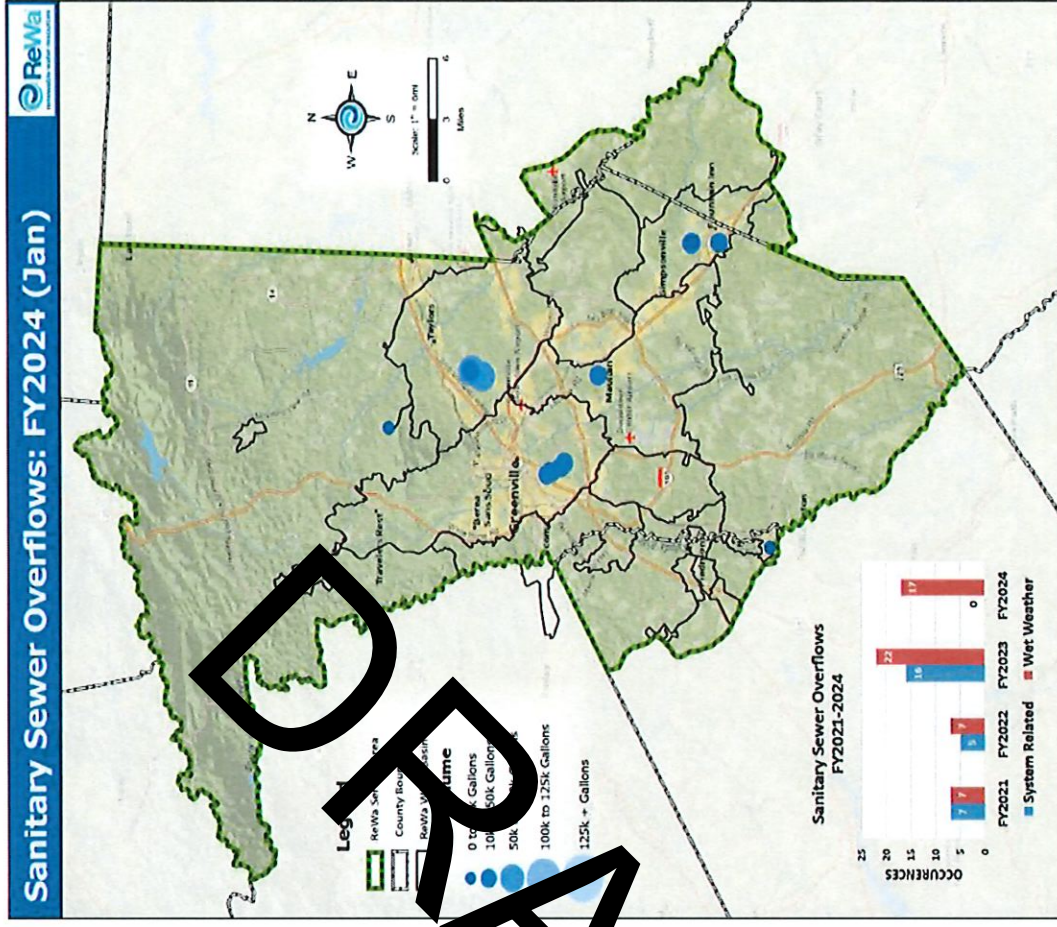
- **184 visits (YTD)**
  - 55 episodic care visits
  - 129 preventive care visits
- Health Plan Savings (YTD) - **\$11,078**
- Productivity Savings (YTD) - **\$10,802**

# 2024 Capital Metrics

Number of Working Projects by Phase



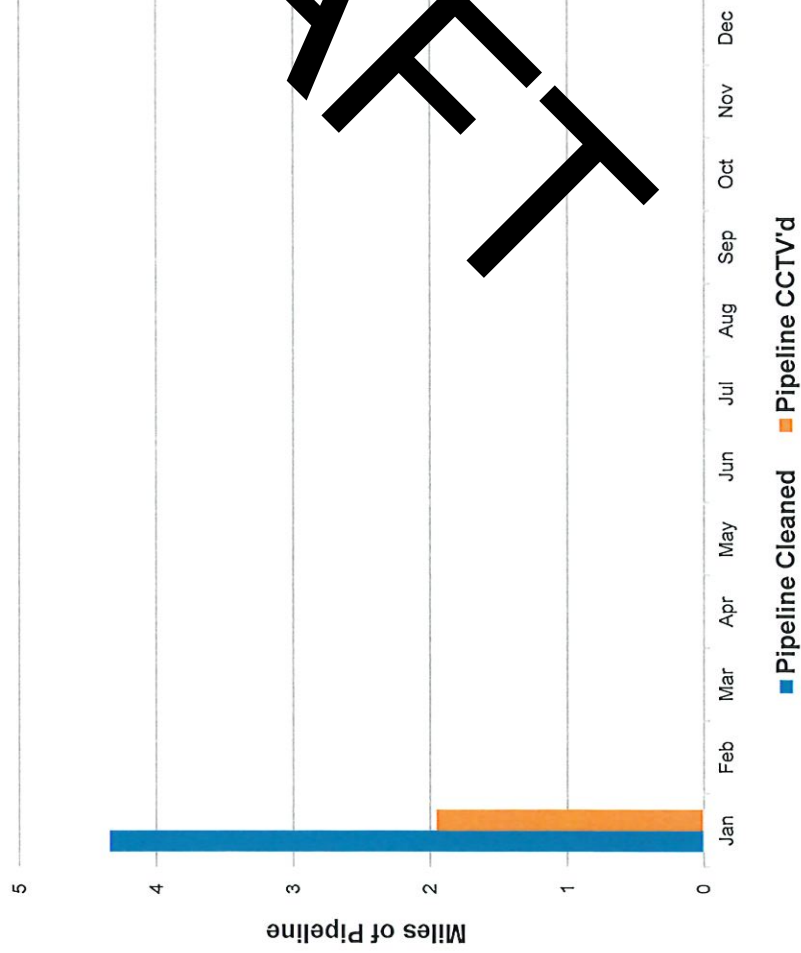
# 2024 Infrastructure Services



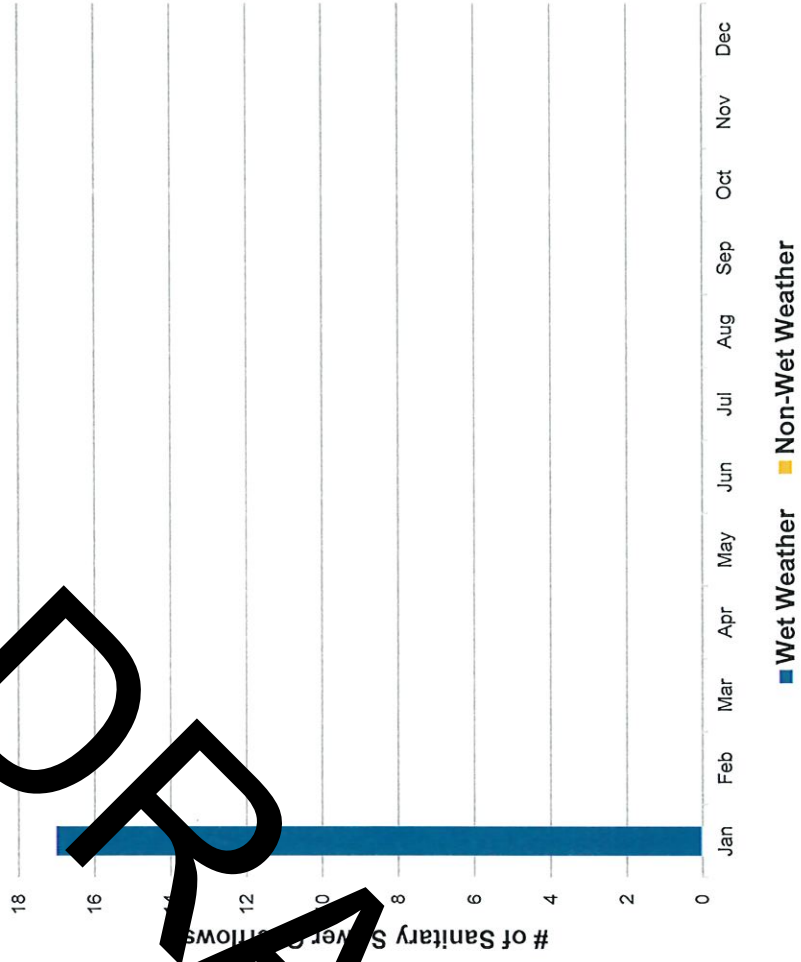


# 2024 Infrastructure Services

## Pipeline Inspection and CCTV

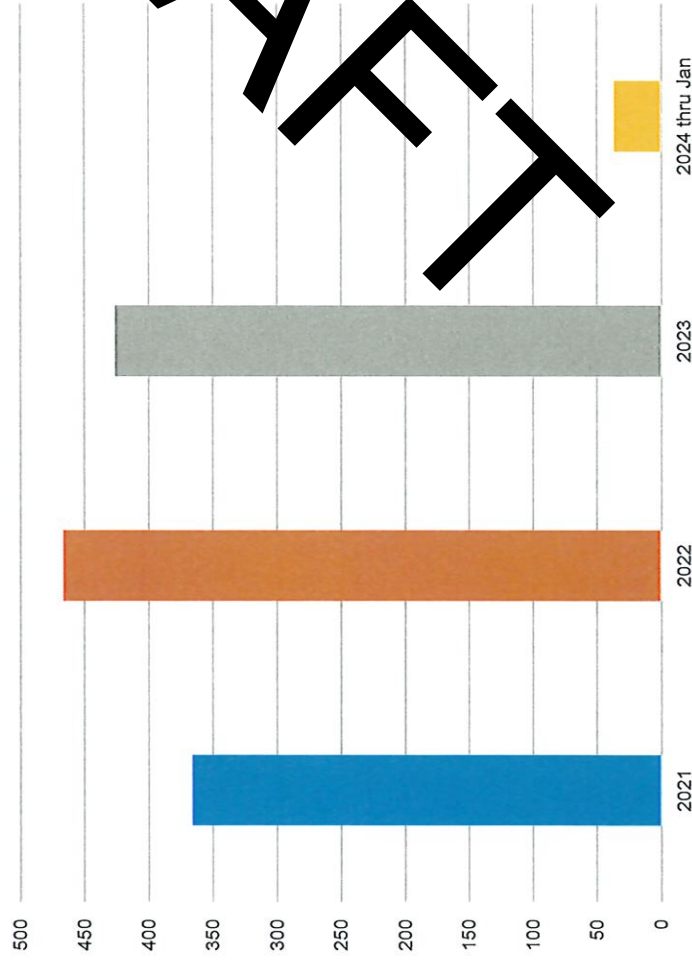


## 2024 Sanitary Sewer Overflows

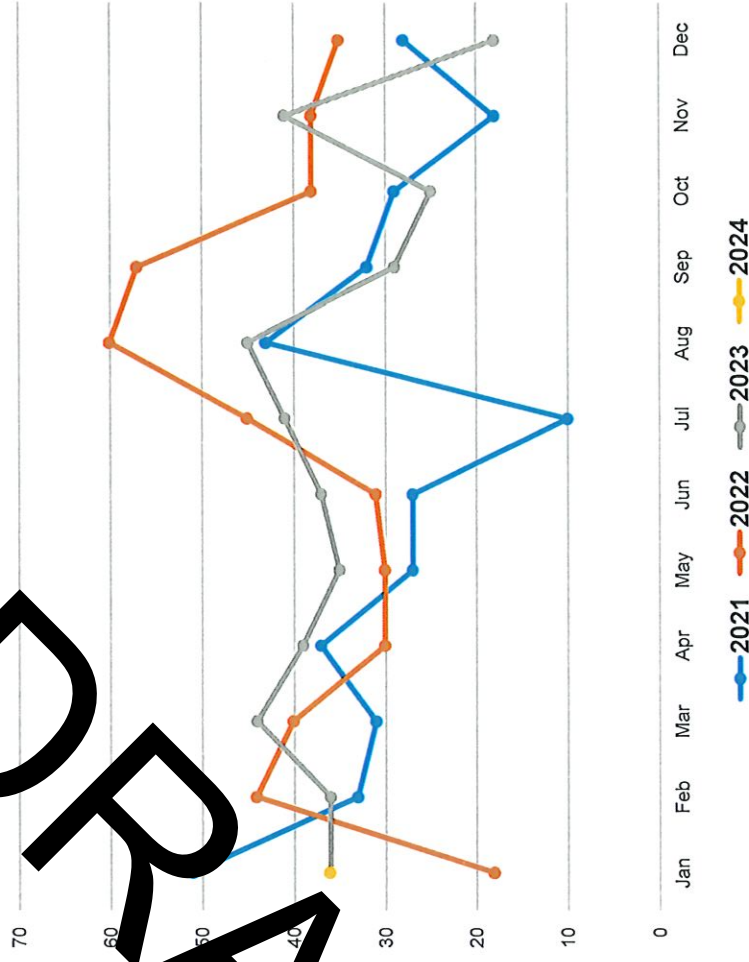


# 2024 Development Metrics

Number of Sewer Interest Requests Received



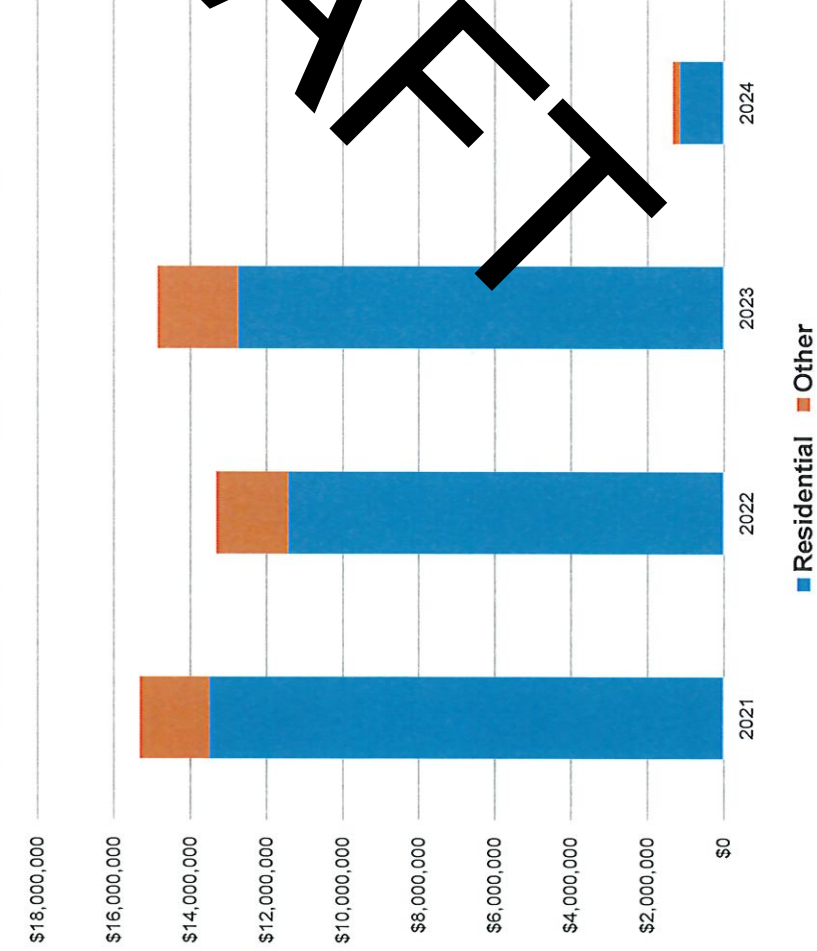
Number of Sewer Interest Requests Received



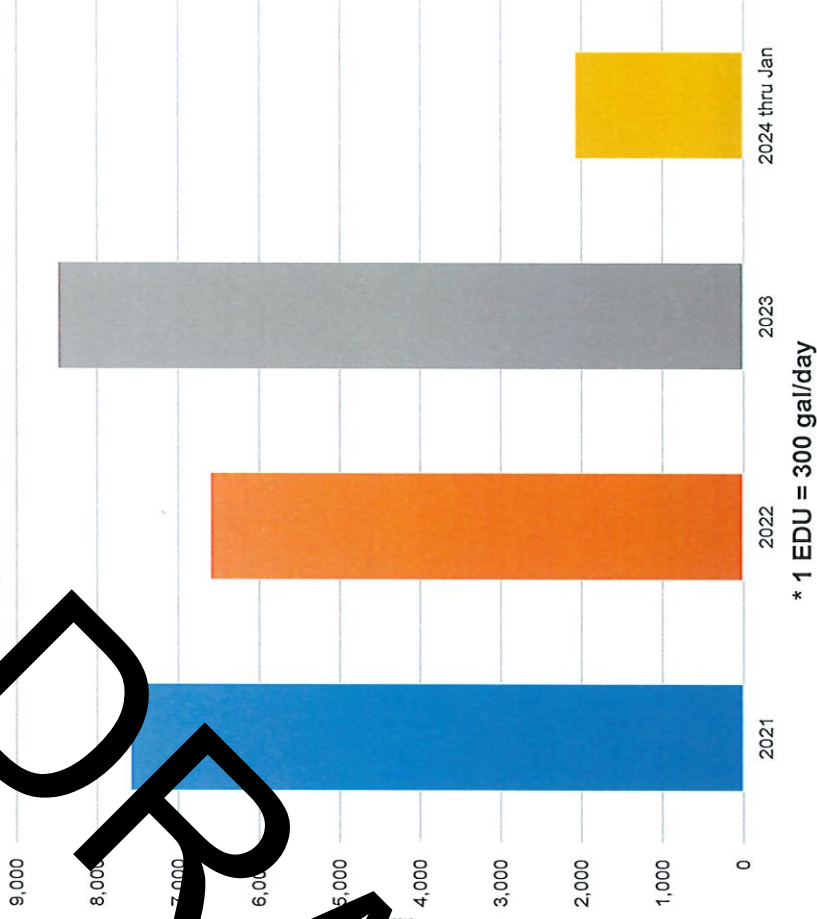


# 2024 Development Metrics

New Account Fees Collected per Year



Total Approved Sum of EDUs

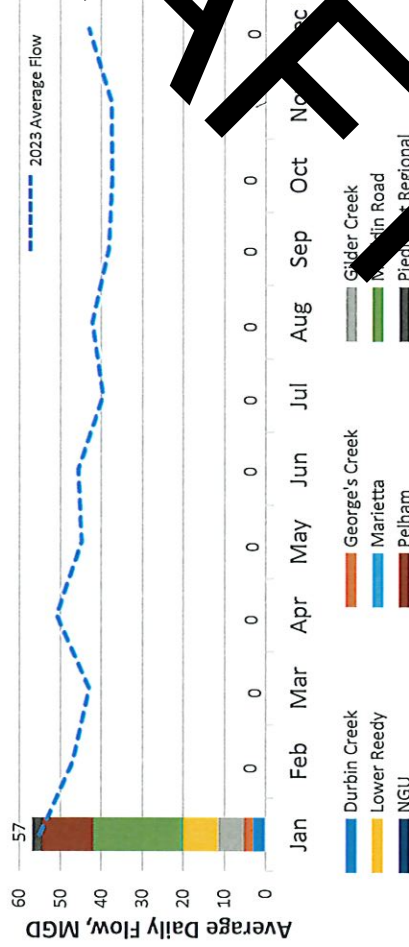


\* 1 EDU = 300 gal/day

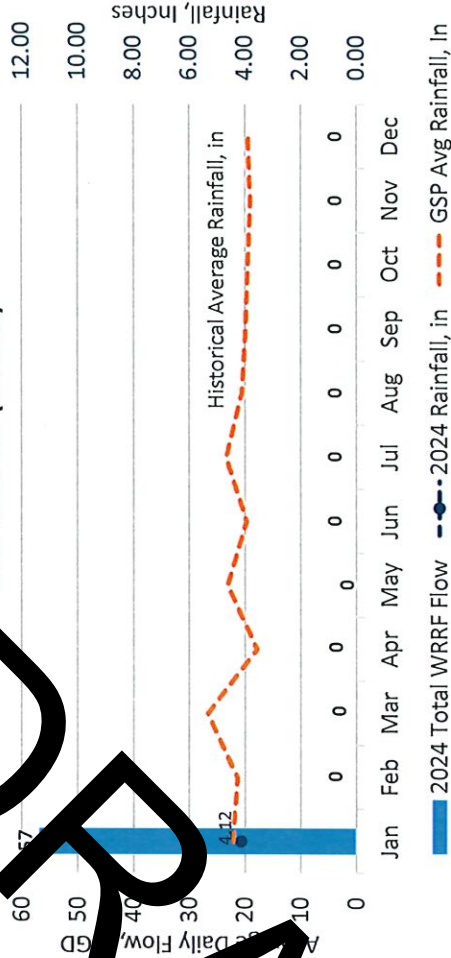
DRAFT

# 2024 WRRF Metrics

2024 WRRF Average Daily Flow  
Millions of Gallons per Day (MGD)



WRRF Cumulative Average Daily Flow (MGD)  
and Rainfall (Inches)



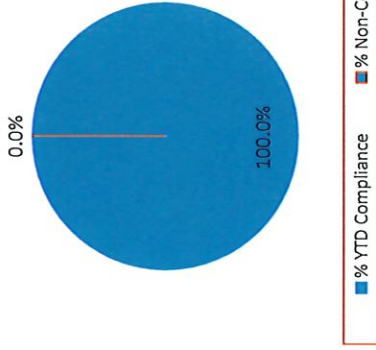
**2023 WRRF Summary:**

- ReWa's WRRFs treated 15.9 Billion Gallons of Water
- 2023 Annual Cumulative Rainfall was 49.2 inches
- Historical Annual Average Rainfall at GSP is 50.2 inches

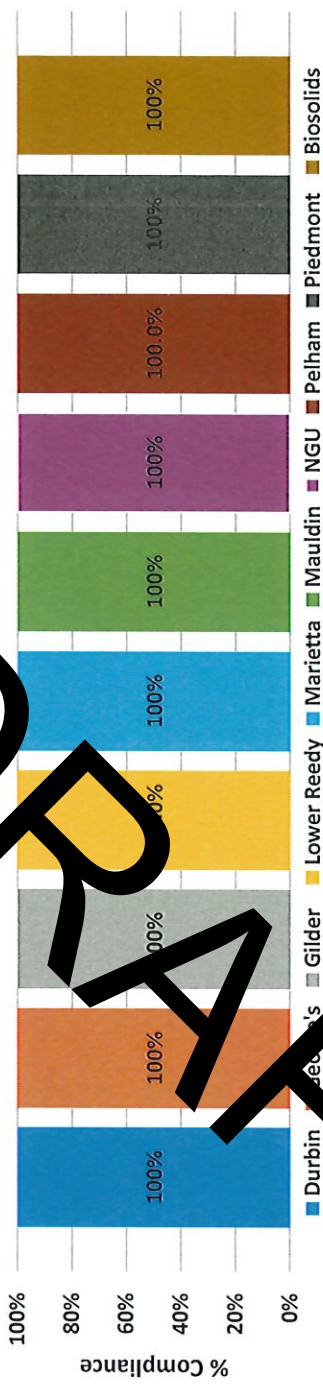


# January 2024 Compliance Metrics

YTD NPDES Compliance



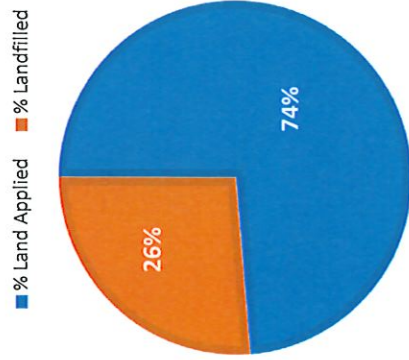
2024 YTD NPDES Compliance



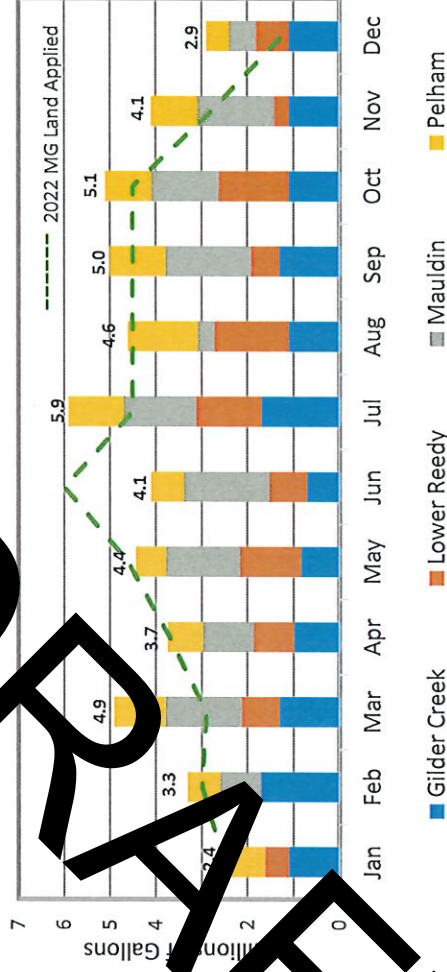
## 2023 Compliance Summary

- ReWa's Compliance with NPDES permit requirements was 99.82% in 2023

**Biosolids Managed by Method YTD**



**2023 Biosolids Land Applied, MG**



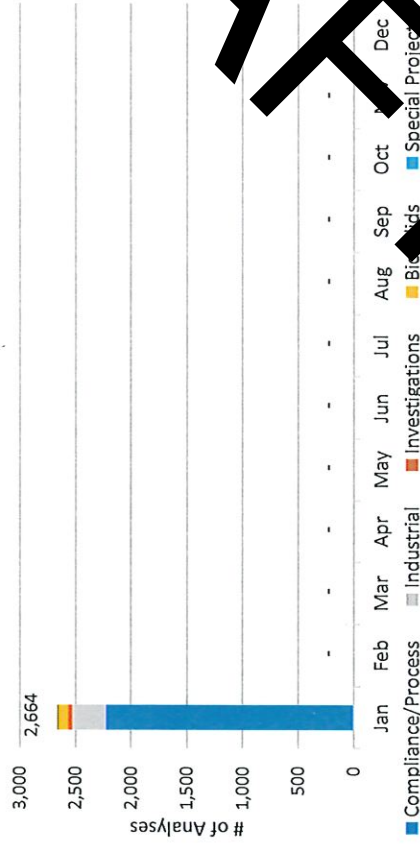
Note: Biosolids metrics lag one month behind other metrics

**2023 Biosolids Summary:**

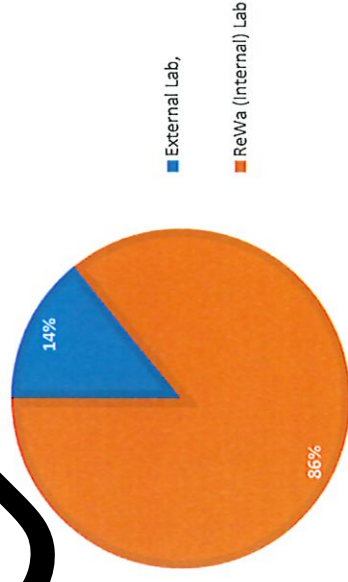
- 44.7 MG or 5776 Dry tons of Biosolids were beneficially reused
- 1839 Dry tons of Biosolids were landfilled

# 2024 Laboratory Metrics

2024 Laboratory Analyses by Category



January Laboratory Analyses



**2023 Laboratory Analysis Summary:**

- 34,850 Laboratory Analysis were performed
- 82.4% of testing was for Compliance and Process Control
- 14.4% of testing was for Industrial Discharges
- 2.1% of testing was for Biosolids
- 1.1% was for Investigations and Special Projects