

APPENDIX F:
PUMP STATION PACKAGES - QUOTES

TENCARVA MACHINERY COMPANY, FEBRUARY 14, 2018

THIS PAGE HAS BEEN LEFT BLANK INTENTIONALLY

TENCARVA MACHINERY COMPANY

1115 PLEASANT RIDGE ROAD; GREENSBORO, NC 27409

PHONE (336) 665-0250; FAX (336) 665-0303

QUOTE TO	Renewable Water Resources	DATE	February 14, 2018
ADDRESS	561 Mauldin Rd Greenville, SC 29607	BUDGET QUOTE NO.	Saluda 2 Pump Station 18-0214
CITY, STATE, ZIP	Greenville, SC	REFERENCE	Spec Section
ENGINEER	Brown and Caldwell	QUOTE FIRM FOR	90 days
SALESMAN	Guy Chapman / Todd Ritchie	ATTACHMENTS	None

We propose to furnish duplex parallel operated Gorman Rupp pump system with the components as defined below:

MODULAR PUMP STATION ENCLOSURE

A 14' x 18' x 10' pre-assembled fiberglass enclosure equipped with a single access door and 10' wide x 8' tall manual Overhead steel roll up door with R-7 insulation. Building has R-13 insulation in the walls and R-19 insulation on the roof, internal LED lights with wall switch, vent fan and intake louvers, station heater and wall mounted receptacle. The enclosure will ship separately from pumps and controls and shall be mounted on concrete slab by contractor. All electrical components will be wired to a load center that the contractor will need to connect to the pump control panel.

PUMPS AND MOTORS

Two Gorman-Rupp Ultra V-Series with Ultra-Mate model VS6A60-B pumps with a design capacity of 1380 GPM at 163' TDH when v-belt driven by 100 HP, 3/60/460 volt, 1750 RPM, open drip proof motors (two) with insulated bearings and shaft grounding rings. Pumps are provided with a drain kit, gauge kit, and pump spare parts kit. Each pump/motor assembly mounted on individual fabricated steel v-belt base. Certified testing included for each pump/motor at the specified design condition.

PUMP CONNECTIONS/VALVES

Individual 8" flanged pump suction connections, QTY 2 6" to 10" increasing cast iron swing check valves, QTY 2 10" chain wheel operated plug valves. An automatic air release valve is provided for each pump. All valves to ship loose, contractor to provide inter-connecting piping downstream of 10"x10"x10" tee.

PUMP MOTOR CONTROL PANEL/LIQUID LEVEL CONTROLLER

Three factory fabricated control panels, shipped loose: Two 80"x40"x18" motor starter panels in NEMA 1 stainless steel floor mounted enclosure housing Square D thermal magnetic circuit breakers, Square D Altivar 630 Variable Frequency Drives with Altistart 48 RVSS backup and one PLC panel, size to be specified in submittals to house A/B Compactlogix L2 PLC and Panelview 7 1000 PLC based level controller with Pulsar Ultra 5 level control system. Hand-off-automatic switch, run light, elapsed time meter, high temperature shutdown circuit and motor overload reset are provided for each pump motor. Also included is pump alternator with sequence selector switch; duplex service receptacle; high level alarm circuit; alarm silence circuit; phase monitor; TVSS, voltage alert indication

ADDITIONAL FEATURES/ EQUIPMENT

Alarm light and horn shipped loose	Aux. Transformer 460/120 volt	Intrinsically safe redundant high water float to be wired to Mission dialer by contractor (by others)
QTY 1 spare V6 rotating assembly and QTY 1 spare parts kit	Startup service 2-day	12" Toshiba LF654 magnetic flow meter with integral converter (shipped loose, to be mounted by contractor)
5KVA transformer	Rosemount 3051T discharge pressure transducer to be mounted in header pipe	

NOTE: Wet well, anchor bolts, external piping, telemetry, generator, trash basket, or anything not specifically mentioned above NOT INCLUDED.

TENCARVA MACHINERY COMPANY

1115 PLEASANT RIDGE ROAD; GREENSBORO, NC 27409

PHONE (336) 665-0250; FAX (336) 665-0303

PRICE FOR THIS EQUIPMENT, EXCLUDING TAXES

\$ 362,925

Tencarva Machinery Company does not provide construction or unloading service.

Delivery Terms:	FOB Factory freight allowed, 7-10 weeks for submittals, 14-18 weeks for production		
Credit Terms:	Net 30 days from date of invoices, no retainage allowed, 1-1/2% monthly on unpaid balance.		
Quote Submitted By:	Guy Chapman	Quote Accepted By:	
Date Quote Submitted	February 14, 2018	Date Quote Accepted	

REV.	DATE	DESCRIPTION
0	02/18	BID DOCUMENTS
REVISIONS: DRAWN: A. JUMPER CHECKED: J. MADZELI APPROVED: J. MADZELI 100-M-001 DWG BC PROJECT NUMBER CLIENT PROJECT NUMBER TL-11		

LINE IS 2 INCHES AT FULL SIZE
 DESIGNED: J. MADZELI
 CHECKED: J. MADZELI
 APPROVED: J. MADZELI
 100-M-001 DWG
 BC PROJECT NUMBER
 CLIENT PROJECT NUMBER
 TL-11

SALUDA PUMP STATION #2 REPLACEMENT

MECHANICAL PUMP STATION PLAN AND SECTIONS

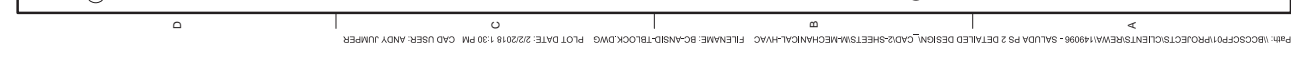
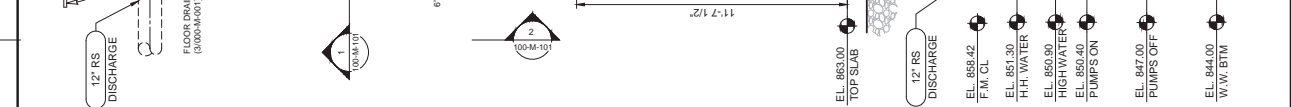
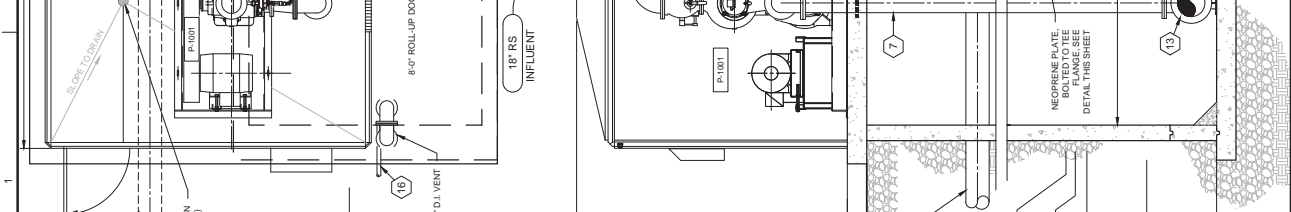
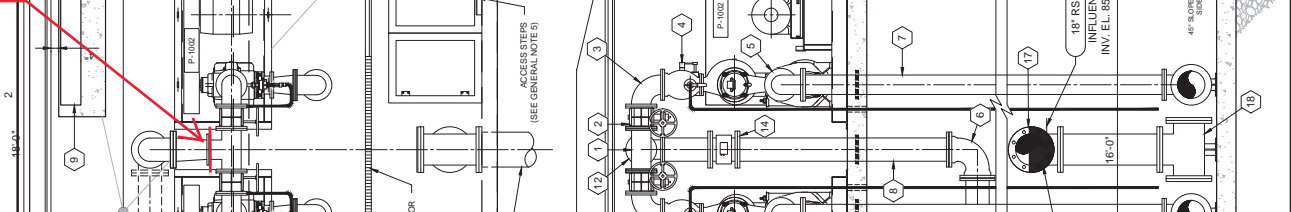
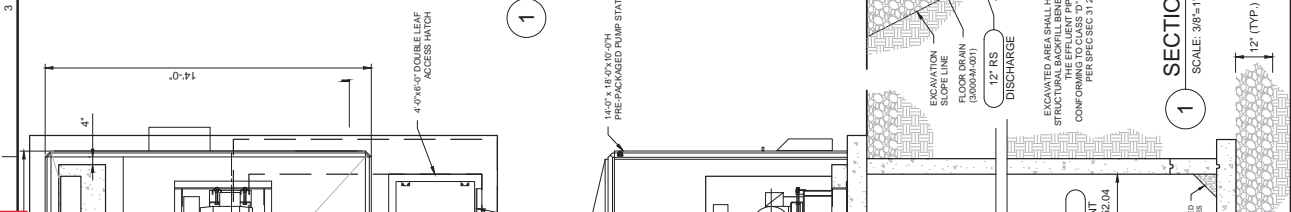
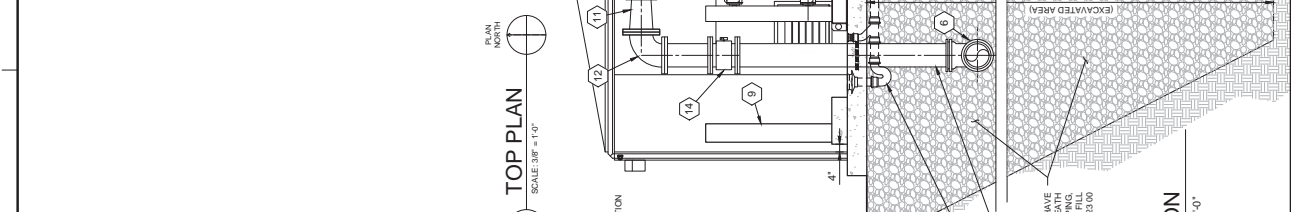
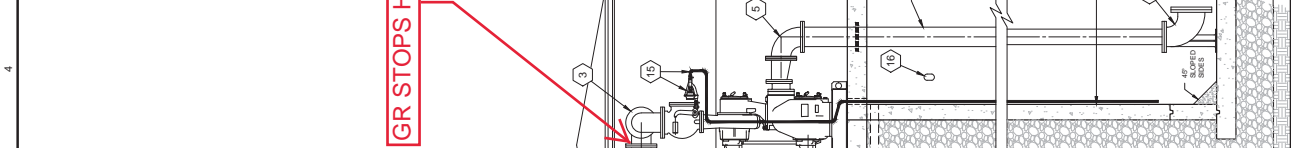
DRAWING NUMBER: 100-M-001
 SHEET NUMBER: 18 OF 20

GENERAL NOTES

- ALL EQUIPMENT, ANCHOR BOLT SIZES, CONNECTIONS, ETC. SHALL BE IN CONFORMANCE WITH THE MANUFACTURER'S RECOMMENDATIONS.
- ALL ALUMINUM SURFACES IN CONTACT WITH CONCRETE SHALL HAVE A BITUMASTIC COATING OR APPROVED EQUAL.
- PRECAST CONCRETE VAULT SHALL BE DESIGNED PER ASTM 880.
- ALL PIPING FROM STA. 0+00 TO THE END OF THE FORCE MAIN SHALL BE DESIGNED FOR SANITARY SEWER (SS) SERVICE PER SPECIFICATION 40 05 01. ALL PIPING FITTINGS AND VALVES FROM WET WELL TO STA. 0+00 SHALL BE DESIGNED FOR RAW SEWAGE (RS) SERVICE PER SPECIFICATION 40 05 01 AND SHALL BE RESTRAINED JOINT.
- INSTALL ACCESS STEPS INSIDE VAULT AT LOCATION SHOWN ON PLAN. STEPS SHALL BE SPACED VERTICALLY AT 16" O.C.
- ALL PRECAST CONCRETE MANHOLE AND VAULT PIPE PENETRATIONS SHALL BE PER DETAIL 1000-M-001.
- CONTRACTOR SHALL PROVIDE ADJUSTABLE PIPE SADDLE AND SUPPORT FOR COMMON HEADER INSIDE VAULT. SUPPORTS SHALL BE STANDARD MODEL S92 SADDLE AND SUPPORT OR APPROVED EQUAL. SADDLE AND SUPPORT SHALL BE INSTALLED WITH SADDLE BASE AND COLLAR ASSEMBLIES, AND SS EXTENSION PIPE, IN ACCORDANCE WITH MANUFACTURER'S RECOMMENDATIONS.
- SEE SPECIFICATION SECTION 40 29 00 FOR CONTROL STRATEGY AND ELEVATIONS.
- REFER TO ELECTRICAL DRAWINGS FOR CONSTRUCTION DETAILS FOR ELECTRICAL AND CONTROL EQUIPMENT AND STANDBY EMERGENCY GENERATOR SYSTEM.

KEYNOTES:

- 10"x10"x10" TEE, FLG.
- 10" CONTROL VALVE, FLG. (TYP. OF 2)
- 10" 90° BEND, FLG. (TYP. OF 2)
- 10"x6" CHECK VALVE, FLG. (TYP. OF 2)
- 10" 90° BEND, FLG. (TYP. OF 2)
- 12" 90° BEND, M.J.
- 10" DIP SUCTION (TYP. OF 2)
- 12" DIP R.J. (DISCHARGE)
- ELECTRICAL CONTROL PANELS
- ULTRASONIC LEVEL TRANSMITTER
- 10"x12" REDUCER, FLG.
- 12" 90° BEND, FLG.
- 14"x10" 90° FLARED BASE ELBOW, FLG. (MOUNTED TO FLOOR) (TYP. OF 2)
- MAGNETIC FLOW METER
- DISCHARGE AIR RELEASE VALVE PIPING TO INCLUDE ISOLATION BALL VALVE ON EACH SIDE OF THE AIR RELEASE VALVE WITH POLYPROPYLENE TUBING (PER 40 05 31) FIELD TO THE AIR RELEASE VALVE. THE SLOPE SHALL BE 1/8" PER FOOT TO THE WELL. INSTALL FITTINGS FORTH AND AFT OF PENETRATIONS THROUGH SLAB.
- 2" DRAIN w/ DUCKBILL CHECK
- 18"x18"x18" BASE TEE, FLG. (MOUNTED TO FLOOR)





TERMS AND CONDITIONS

Project	Customer	TMC Job#
---------	----------	----------

1. **TERMS:** The terms of payment for equipment, subject to credit approval, of this proposal are strictly **Net 30 days** from date of shipment. **No Retainage is allowed.** Failure to comply with these terms will result in suspension of further goods or services which may be due on this order. Interest in the amount of 1.5% per month will be added to all invoices not paid within 30 days from the date of the invoice and will continue to apply after any Court Judgement obtained against the customer. If the customer's offer is not received during the period stated in the QUOTATION, the seller reserves the right to void the QUOTATION. In the event seller retains an attorney to enforce it's rights, customer agrees to pay reasonable attorney's fees, plus other fees and expenses related thereto.

SPECIFICATIONS AND GENERAL CONDITIONS: The equipment will comply with any specifications listed in the Purchase Order. Any project general conditions or specifications are specifically not included in these terms and conditions.

2. **CHANGES:** Complete submittal data (including installation instructions) on all equipment will be provided for engineering approval, showing general arrangement and approximate dimensions. Any change in layouts or design required by the customer after engineering approval and release to manufacturer for production will be made at Customer's expense and will require a written Change Order.

3. **DELIVERY:** Unless otherwise specified, delivery times quoted are figured from the date of receipt of complete technical data and approved drawings. Statements as to expected shipping dates from the factory represent our best judgement based on information supplied to us. The Seller will not be held liable for damages, either direct or indirect, consequential, incidental, special, or liquidated, arising from delay in shipment or delivery. Any loss, damage or delay caused by fire, flood, weather, or other acts of the elements, breakdowns, lockouts, strikes or labor disputes, the failure of suppliers to meet their contractual obligations or any other cause beyond the reasonable control of the Seller, are hereby waived, as are all claims for loss or damage due to delay. It is agreed and understood that the Equipment will be billed on the date the equipment is ready for shipment and payment will be due thirty (30) days from that date (subject to credit approval). Storage charges will begin to accrue 30 days from the invoice date, and become first due sixty (60) days after the invoice date. Storage charges shall continue to accrue until delivery.

4. **SHIPMENT:** Shipment terms are F.O.B. place of manufacture with freight allowed to the job site. The buyer will have the responsibility for unloading the equipment from the carrier and for storing the same prior to installation. The Customer will store and install the equipment after delivery and shall bear full responsibility for the equipment during this period. Risk of damage and loss, as well as title, shall pass to Customer after delivery to the carrier.

5. **START-UP::** The Seller will provide the number of days start-up services as stated in the quotation. Additional time for start-up services above the quoted number of days (other than warranty work) will be on a per diem basis and will require a written Purchase Order. The Seller requires 14 days notice to assure being on the job site for start-up at a specific time.

6. **WARRANTY:** All equipment is warranted by the manufacturer, Tencarva Machinery Company makes no additional warranties. The warranty covers defects in materials and workmanship only, and does not cover items consumed in normal operation or maintenance. **SELLER MAKES NO OTHER WARRANTIES, EXPRESS OR IMPLIED, AS TO ANY MATTER WHATSOEVER, INCLUDING WITHOUT LIMITATION, THE CONDITION OF THE EQUIPMENT, IT'S MERCHANTABILITY OR FITNESS FOR ANY PARTICULAR PURPOSE. SELLER SHALL NOT BE LIABLE FOR ANY DAMAGES BY REASON OF FAILURE OF THE EQUIPMENT TO OPERATE OR OF FAULTY OPERATION OF THE EQUIPMENT. SELLER SHALL NOT BE HELD RESPONSIBLE FOR ANY DIRECT, INCIDENTAL, LIQUIDATED OR CONSEQUENTIAL DAMAGES, OR LOSSES RESULTING FROM THE INSTALLATION, OPERATION OR USE OF THE EQUIPMENT.** Seller's liability for breach of warranty hereunder is limited solely and exclusively to THE repair or replacement of the equipment, in Seller's sole discretion. This shall constitute Customer's sole and exclusive remedy for any breach by Seller of it's warranty. In any event, no claim of any kind, whether as to the Equipment delivered of later delivery or non-delivery, shall be greater than the amount of the purchase price of the Equipment.

7. **OFFER AND ACCEPTANCE:** This proposal is an invitation to deal and is not intended by the Seller as an offer to sell. The buyer may offer to buy the equipment by executing the offer to purchase below which may be accepted by the Seller. The Seller reserves any and all rights and remedies provided for by law, specifically including all lien and bond rights. Orders may be cancelled only with Seller's written consent and on terms which will indemnify Seller against loss. The general conditions and specifications and other condition of Seller's Terms and Conditions shall control where there is any inconsistency between terms and conditions contained in the Seller's Terms and Conditions and any terms, conditions or provisions of Buyer's Contact documents. The Seller is not responsible for and does not agree to any liquidated damage or penalty provisions. These terms and conditions will supersede all other terms and conditions pertaining to this proposal.

OFFER TO PURCHASE: Buyer hereby offers to purchase the equipment goods and services described herein in accordance with the terms and condition set fourth above.	ACCEPTANCE: Seller hereby accepts Buyer's offer to purchase.
BY:	BY:
DATE	DATE:

TENCARVA MACHINERY COMPANY

1115 PLEASANT RIDGE ROAD; GREENSBORO, NC 27409

PHONE (336) 665-0250; FAX (336) 665-0303

QUOTE TO	Renewable Water Resources	DATE	February 14, 2018
ADDRESS	561 Mauldin Rd Greenville, SC 29607	BUDGET QUOTE NO.	Saluda 3 Pump Station 18-0214
CITY, STATE, ZIP	Greenville, SC	REFERENCE	Spec Section
ENGINEER	WK Dickson	QUOTE FIRM FOR	90 days
SALESMAN	Guy Chapman / Todd Ritchie	ATTACHMENTS	None

We propose to furnish triplex parallel operated Gorman Rupp pump system with the components as defined below:

MODULAR PUMP STATION ENCLOSURE

A 15'10" x 22' x 10' pre-assembled fiberglass enclosure equipped with a single access door, double access door and 10' wide x 8' tall manual Overhead steel roll up door with R-7 insulation. Building has R-13 insulation in the walls and R-19 insulation on the roof, internal LED lights with wall switch, vent fan and intake louvers, station heater and wall mounted receptacle. The enclosure will ship separately from pumps and controls and shall be mounted on concrete slab by contractor. All electrical components will be wired to a load center that the contractor will need to connect to the pump control panel.

PUMPS AND MOTORS

Three Gorman-Rupp Ultra V-Series model V6A60-B pumps with a design capacity of 850-1250 GPM at 126-130.5' TDH during simplex operation and 900GPM at 143.7'TDH during duplex operation when v-belt driven by 75 HP, 3/60/460 volt, 1750 RPM, open drip proof motors (three) with insulated bearings and shaft grounding rings. Pumps are provided with a drain kit, gauge kit, and pump spare parts kit. All three pumps/motors will be mounted on a common fabricated steel v-belt baseplate. Certified testing included for each pump/motor at the specified design conditions.

PUMP CONNECTIONS/VALVES

Individual 8" flanged pump suction connections, QTY 3 6" to 8" increasing cast iron swing check valves, QTY 3 8" chain wheel operated plug valves. An automatic air release valve is provided for each pump. Pump skid will ship with valves mounted. Header piping will ship separate. Contractor to provide all piping downstream of header at 8"x10"x10" tee.

PUMP MOTOR CONTROL PANEL/LIQUID LEVEL CONTROLLER

Four factory fabricated control panel, shipped loose: Three 80"x40"x18" motor starter panels in NEMA 1 stainless steel floor mounted enclosure housing Square D thermal magnetic circuit breakers, Square D Altivar 630 Variable Frequency Drives with Altistart 48 RVSS backup and one PLC panel, size to be specified in submittals to house A/B Compactlogix L2 PLC and Panelview 7 1000 PLC based level controller with Pulsar Ultra 5 level control system. Hand-off-automatic switch, run light, elapsed time meter, high temperature shutdown circuit and motor overload reset are provided for each pump motor. Also included is pump alternator with sequence selector switch; duplex service receptacle; high level alarm circuit; alarm silence circuit; phase monitor; TVSS, voltage alert indication

ADDITIONAL FEATURES/ EQUIPMENT

Alarm light and horn shipped loose	Aux. Transformer 460/120 volt	Intrinsically safe redundant high water float to be wired to Mission dialer by contractor
QTY 1 spare V6 rotating assembly and QTY 1 spare parts kit	Startup service 2-day	12" Toshiba LF654 Magnetic Flow Meter with integral converter (shipped loose, to be mounted by contractor)
5 KVA transformer	Rosemount 3051T discharge pressure transducer to be mounted in header pipe	

NOTE: Wet well, anchor bolts, external piping, telemetry, generator, trash basket, or anything not specifically mentioned above NOT INCLUDED.

TENCARVA MACHINERY COMPANY

1115 PLEASANT RIDGE ROAD; GREENSBORO, NC 27409

PHONE (336) 665-0250; FAX (336) 665-0303

PRICE FOR THIS EQUIPMENT, EXCLUDING TAXES
--

\$ 374,695

Tencarva Machinery Company does not provide construction or unloading service.

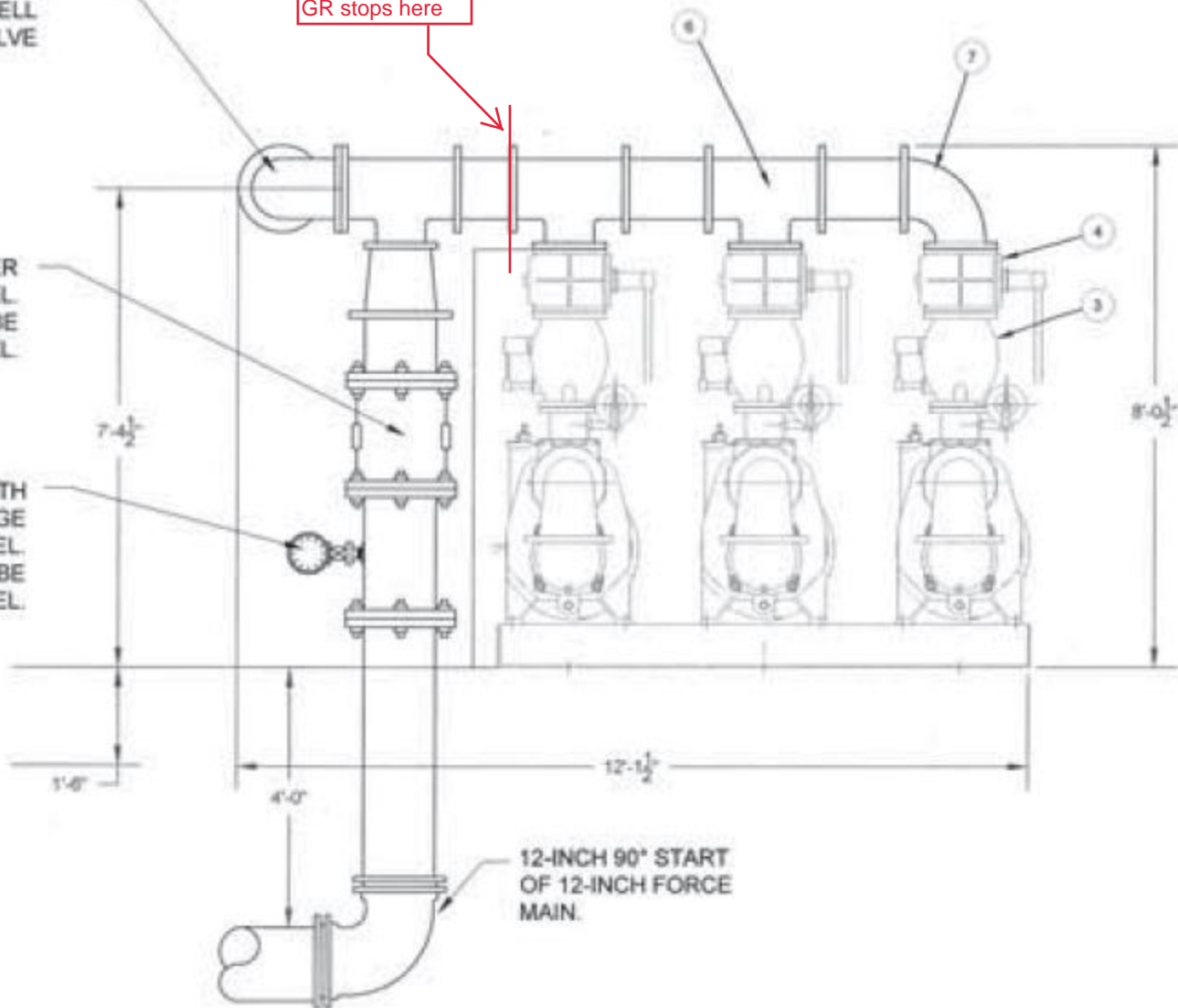
Delivery Terms:	FOB Factory freight allowed, 6-10 weeks for submittals, 14-18 weeks for production		
Credit Terms:	Net 30 days from date of invoices, no retainage allowed, 1-1/2% monthly on unpaid balance.		
Quote Submitted By:	Guy Chapman	Quote Accepted By:	
Date Quote Submitted	February 14, 2018	Date Quote Accepted	

- (1) - 10" 90° BEND
- (1) - 10" TO 4" REDUCER
- (1) - 4-INCH SURGE RELIEF VALVE
- (1) - 4-INCH DIP DRAIN TO WETWELL
- (1) - 4-INCH PLUG VALVE

GR stops here

12-INCH Ø MAGNETIC FLOW METER
CONNECTED TO SCADA PANEL.
FLOW RATE READ-OUT TO BE
INSTALLED AT CONTROL PANEL.

12-INCH Ø SPOOL PIECE WITH
DIGITAL PRESSURE GAUGE
CONNECT TO SCADA PANEL.
PRESSURE READ-OUT TO BE
INSTALLED AT CONTROL PANEL.



12-INCH 90° START
OF 12-INCH FORCE
MAIN.



TERMS AND CONDITIONS

Project	Customer	TMC Job#
---------	----------	----------

1. **TERMS:** The terms of payment for equipment, subject to credit approval, of this proposal are strictly **Net 30 days** from date of shipment. **No Retainage is allowed.** Failure to comply with these terms will result in suspension of further goods or services which may be due on this order. Interest in the amount of 1.5% per month will be added to all invoices not paid within 30 days from the date of the invoice and will continue to apply after any Court Judgement obtained against the customer. If the customer's offer is not received during the period stated in the QUOTATION, the seller reserves the right to void the QUOTATION. In the event seller retains an attorney to enforce it's rights, customer agrees to pay reasonable attorney's fees, plus other fees and expenses related thereto.

SPECIFICATIONS AND GENERAL CONDITIONS: The equipment will comply with any specifications listed in the Purchase Order. Any project general conditions or specifications are specifically not included in these terms and conditions.

2. **CHANGES:** Complete submittal data (including installation instructions) on all equipment will be provided for engineering approval, showing general arrangement and approximate dimensions. Any change in layouts or design required by the customer after engineering approval and release to manufacturer for production will be made at Customer's expense and will require a written Change Order.

3. **DELIVERY:** Unless otherwise specified, delivery times quoted are figured from the date of receipt of complete technical data and approved drawings. Statements as to expected shipping dates from the factory represent our best judgement based on information supplied to us. The Seller will not be held liable for damages, either direct or indirect, consequential, incidental, special, or liquidated, arising from delay in shipment or delivery. Any loss, damage or delay caused by fire, flood, weather, or other acts of the elements, breakdowns, lockouts, strikes or labor disputes, the failure of suppliers to meet their contractual obligations or any other cause beyond the reasonable control of the Seller, are hereby waived, as are all claims for loss or damage due to delay. It is agreed and understood that the Equipment will be billed on the date the equipment is ready for shipment and payment will be due thirty (30) days from that date (subject to credit approval). Storage charges will begin to accrue 30 days from the invoice date, and become first due sixty (60) days after the invoice date. Storage charges shall continue to accrue until delivery.

4. **SHIPMENT:** Shipment terms are F.O.B. place of manufacture with freight allowed to the job site. The buyer will have the responsibility for unloading the equipment from the carrier and for storing the same prior to installation. The Customer will store and install the equipment after delivery and shall bear full responsibility for the equipment during this period. Risk of damage and loss, as well as title, shall pass to Customer after delivery to the carrier.

5. **START-UP::** The Seller will provide the number of days start-up services as stated in the quotation. Additional time for start-up services above the quoted number of days (other than warranty work) will be on a per diem basis and will require a written Purchase Order. The Seller requires 14 days notice to assure being on the job site for start-up at a specific time.

6. **WARRANTY:** All equipment is warranted by the manufacturer, Tencarva Machinery Company makes no additional warranties. The warranty covers defects in materials and workmanship only, and does not cover items consumed in normal operation or maintenance. **SELLER MAKES NO OTHER WARRANTIES, EXPRESS OR IMPLIED, AS TO ANY MATTER WHATSOEVER, INCLUDING WITHOUT LIMITATION, THE CONDITION OF THE EQUIPMENT, IT'S MERCHANTABILITY OR FITNESS FOR ANY PARTICULAR PURPOSE. SELLER SHALL NOT BE LIABLE FOR ANY DAMAGES BY REASON OF FAILURE OF THE EQUIPMENT TO OPERATE OR OF FAULTY OPERATION OF THE EQUIPMENT. SELLER SHALL NOT BE HELD RESPONSIBLE FOR ANY DIRECT, INCIDENTAL, LIQUIDATED OR CONSEQUENTIAL DAMAGES, OR LOSSES RESULTING FROM THE INSTALLATION, OPERATION OR USE OF THE EQUIPMENT.** Seller's liability for breach of warranty hereunder is limited solely and exclusively to THE repair or replacement of the equipment, in Seller's sole discretion. This shall constitute Customer's sole and exclusive remedy for any breach by Seller of it's warranty. In any event, no claim of any kind, whether as to the Equipment delivered of later delivery or non-delivery, shall be greater than the amount of the purchase price of the Equipment.

7. **OFFER AND ACCEPTANCE:** This proposal is an invitation to deal and is not intended by the Seller as an offer to sell. The buyer may offer to buy the equipment by executing the offer to purchase below which may be accepted by the Seller. The Seller reserves any and all rights and remedies provided for by law, specifically including all lien and bond rights. Orders may be cancelled only with Seller's written consent and on terms which will indemnify Seller against loss. The general conditions and specifications and other condition of Seller's Terms and Conditions shall control where there is any inconsistency between terms and conditions contained in the Seller's Terms and Conditions and any terms, conditions or provisions of Buyer's Contact documents. The Seller is not responsible for and does not agree to any liquidated damage or penalty provisions. These terms and conditions will supersede all other terms and conditions pertaining to this proposal.

OFFER TO PURCHASE: Buyer hereby offers to purchase the equipment goods and services described herein in accordance with the terms and condition set fourth above.	ACCEPTANCE: Seller hereby accepts Buyer's offer to purchase.
BY:	BY:
DATE	DATE: